

GUIDANCE MANUAL FOR THE NHS ADULT INPATIENT SURVEY 2012

THE CO-ORDINATION CENTRE FOR THE
NHS PATIENT SURVEY PROGRAMME

Last updated: 17th August 2012

Contacts

The Co-ordination Centre for the Patient Survey Programme
Buxton Court
3 West Way
Oxford
OX2 0JB

Tel: 01865 208127
Fax: 01865 208101
E-mail: acute.data@pickereurope.ac.uk
Website: www.nhssurveys.org

Key personnel

Chris Graham (Manager)

Esther Howell
Caroline Killpack
Jenny King
Katherine Körner
Sheena MacCormick
Alexandra Skew
Catherine Turney
Mark Waters

Adherence to the procedures outlined in this document

It is not permissible to deviate from the agreed protocol as set out in this guidance manual, for example, by offering financial inducements or lottery prizes to respondents. Similarly, we do not recommend translation of questionnaires into other languages within the national survey. More guidance on how to reach ethnic minority groups can be found in Section 8. The terms of the ethical approval do not permit these types of alteration. Furthermore, such alterations might mean that the comparability of the survey would be compromised, and such results may not be acceptable for computation of the relevant measures within the Care Quality Commission assessments for that trust. If trusts want to make any adjustments to the method or materials set out in this guidance, they will need to seek local research ethics approval, and check with the Co-ordination Centre that the proposed alteration would not compromise comparability.

Updates

Before you start work on your survey, check that you have the latest version of this document, as there might be some small amendments from time to time (the date of the last update is on the front page). In the very unlikely event that there are any major changes, we will e-mail all trust contacts and contractors directly to inform them of the change.

This document is available from the Co-ordination Centre website at:

www.NHSSurveys.org

Contents

1	Introduction: The importance of patient feedback.....	1
1.1	The Care Quality Commission.....	1
1.2	The Co-ordination Centre for patient surveys.....	1
1.3	Why we need patient feedback.....	1
1.4	Patient feedback and the NHS Constitution	2
1.5	Care Quality Commission assessments	2
1.6	Measuring performance over time	2
1.7	Commissioning for Quality and Innovation (CQUIN)	3
1.8	Embargo on results	3
1.9	Basic requirements for NHS trust inpatient survey	3
1.10	Why you need this guide	4
2	Setting up a project team.....	5
3	What's new for 2012?.....	6
3.1	Changes for the 2012 inpatient survey	6
4	Deciding whether to use an approved contractor or carry out the survey in-house.....	8
4.1	Costs	8
4.2	Internal resources.....	9
4.3	Timing.....	9
4.4	Quality and confidence in the findings	9
5	Commissioning a survey from an approved contractor.....	11
5.1	List of approved contractors	11
5.2	Contracts with survey contractors.....	12
6	Data protection and confidentiality.....	13
6.1	Statements of compliance with data protection	14
6.2	Section 251 Approval	14
6.3	Keeping patient mailing data and sample data separate	15
6.4	Mailing questionnaires to patients	15
6.5	Sharing personal data (patients' names and addresses).....	16
6.6	Encryption of personal data	17
6.7	Contractor responsibilities (service contract).....	17
6.8	Assurances of patient anonymity.....	17

6.9	Patient confidentiality.....	18
6.10	Sharing of survey data between contractors.....	20
6.11	Storing completed questionnaires	20
7	Ethical issues, ethics committees and research governance.....	21
7.1	Ethical approval for the inpatient survey	21
7.2	Research governance requirements.....	21
8	Collecting data from non-English-speaking populations	24
9	Timetable.....	25
10	Compiling a list of patients.....	27
10.1	Compile a list of eligible patients	27
10.2	Checks carried out by the trust.....	28
10.3	Submitting your patient list to the Demographics Batch Service (DBS)	30
10.4	Identifying deceased patients when the patient file is returned from DBS	31
10.5	Create the sample file.....	32
10.6	Checking the distribution of patient ages in your sample.....	37
10.7	Checking the distribution of patient gender in your sample	37
10.8	Checking for other errors with your sample	38
10.9	Separating mailing details from sample information	38
10.10	Sharing the patient sample file with an approved contractor	39
10.11	Making more use of the survey locally.....	39
10.12	Summary of key steps	41
11	Final sampling inspection by the Co-ordination Centre	42
11.1	Procedure for submitting the anonymised sample file to the Co-ordination Centre	42
11.2	Timetable for submitting data to the Co-ordination Centre	42
11.3	Making the most of the fieldwork period	43
12	Weekly Monitoring	44
12.1	Monitoring response rates	44
12.2	Helpline monitoring.....	45
13	Publicising the survey.....	46
13.1	Pre-survey communication with staff	46

	13.2	Publicising the survey externally.....	46
14		The core questions and question bank	48
	14.1	The core questionnaire	48
	14.2	Using the Question Bank Tool to create an enhanced questionnaire.....	48
15		Materials	50
	15.1	Printing questionnaires	50
	15.2	Trust headed paper	50
	15.3	Mail out envelopes.....	51
	15.4	Materials required for first mailing.....	51
	15.5	Materials required for second mailing (first reminder).....	51
	15.6	Materials required for third mailing (second reminder)	52
	15.7	Other mailings and inclusion of other information in the mailing packs.....	52
16		Implementing the survey - practicalities.....	53
	16.1	Setting up a FREEPOST address	53
	16.2	Setting up a PO Box	53
	16.3	FREEPHONE line.....	53
	16.4	Covering letters	54
	16.5	Sending out questionnaires	55
	16.6	Booking in questionnaires	56
	16.7	Sending out reminders	56
17		Entering data	58
	17.1	Entering data from the core questionnaire.....	58
	17.2	Entering data from enhanced questionnaires	59
	17.3	Entering written comments ('free text') from patients.....	60
	17.4	Coding data	61
	17.5	Submitting data to the Co-ordination Centre.....	61
	17.6	Checklist.....	67
18		Making sense of the data.....	69
	18.1	Using the 'Data Entry Spreadsheet' to analyse your results.....	69
	18.2	Suggestions for data analysis.....	69
19		Reporting results	72

19.1	Prioritising your findings	72
19.2	Writing the report	73
20	Using results for quality improvement.....	74
20.1	Prepare in advance	74
20.2	Dissemination of survey results	74
20.3	Identify key "change agents"	75
20.4	Prioritising areas for improvement.....	75
20.5	Develop an action plan	76
20.6	Use small follow-up surveys or focus groups to delve deeper ..	76
20.7	Use already existing resources.....	76
21	Glossary	77
	Appendix 1: Suggested text for pre-survey communication with staff	78
	Appendix 2: Suggested template text for pre-survey article for external media	79
	Appendix 3: Declarations of data protection compliance	80
	Appendix 4: Declarations for additional data analysts	81

List of tables

Table 1 – Responsibilities of NHS organisations who are carrying out research.....	22
Table 2 – Inpatient Survey timetable	25
Table 3 – Sample construction spreadsheet of patient details	33
Table 4 – Example mailing file.....	39
Table 5 – Sample submission dates.....	42
Table 6 – Data fields to be included if sending separate data file of free text comments	60
Table 7 – Data fields to be included in final data file submitted to Co-ordination Centre	62
Table 8 – Example of data file to be submitted to Co-ordination Centre	66
Table 9 – Checks to be carried out on final data prior to submitting the data to the Co-ordination Centre	68
Table 10 – Confidence intervals for different numbers of respondents	71

List of figure

Figure 1 – Example Age Histogram for Inpatient Survey 2011.....	37
---	----

1 Introduction: The importance of patient feedback

1.1 The Care Quality Commission

The NHS Patient Survey Programme was established by the Department of Health and has been operating since 2002. The Care Quality Commission (CQC) is the independent regulator of health and social care in England and is responsible for administering the programme. The CQC regulates care provided by the NHS, private companies and voluntary organisations. The CQC aims to ensure better care is provided for everyone – in hospitals, care homes and people’s own homes.

By ensuring that organisations carry out these surveys in a consistent and systematic way it is possible to build up a national picture of people’s experience and, *with care*, to compare the performance of different organisations, monitor change over time, and identify variations between different patient groups. The surveys are expected to inform local improvement activity; they are seen as an important source of information for people to help them choose between providers and for informing commissioners of services. As well as supplying the Department of Health with data to assess performance against national targets on patient experience, the survey programme provides an important source of data for CQC’s assessments.

1.2 The Co-ordination Centre for patient surveys

The Co-ordination Centre for the NHS Patient Survey Programme, of which the NHS adult inpatient survey is part, is based at Picker Institute Europe and works under contract to the Care Quality Commission to design, test, and co-ordinate the surveys in the NHS Patient Survey Programme.

1.3 Why we need patient feedback

Quality in health and medical care has two distinct dimensions. One has to do with the quality of care from the perspective of professional, technical standards; and the other dimension concerns the quality of care from the perspective of patients. Understanding the way patients experience the care they receive is essential to a complete assessment of the quality of healthcare, and this can only be obtained by asking the patients themselves.

It is important to adopt systematic, appropriate and effective ways to ask patients about their experiences, and use this information to shape and improve the way healthcare is delivered. This manual is designed to help staff in NHS hospital trusts to obtain patient feedback through the national inpatient survey. It also provides guidance on how you may use the information you gather in quality improvement programmes and for monitoring performance. By following this guidance, you will also help to ensure that the survey results from your trust are comparable with other trusts, and with national benchmarks.

1.4 Patient feedback and the NHS Constitution

Improving the experience of each individual patient is at the centre of the NHS Constitution. Obtaining feedback from patients and taking account of their views and priorities are vital for the delivery of high quality services and for driving real service improvements.

The NHS Constitution requires that NHS services reflect the needs and preferences of patients, their families and their carers. It is therefore important that all NHS trusts carry out local surveys asking patients their views on the services they have received. The National Patient Survey Programme is an important mechanism for making the NHS more patient-focused and provides a quantifiable way of achieving this by:

- providing information to support local quality improvement initiatives
- tracking changes in patient experience locally over time
- providing information for active performance management
- providing information to support public and parliamentary accountability
- providing information for the Care Quality Commission's programme of reviews and inspections.

1.5 Care Quality Commission assessments

Information drawn from the core questions in the inpatients survey will be used by the Care Quality Commission in its assessment of acute and specialist trusts in England. The survey results will be used when producing the CQC quality and risk profiles (QRP) for NHS trusts. The QRP is a tool that gathers all relevant information about a trust in one place. It enables the CQC to assess where risks lie and prompt front line regulatory activity, such as inspection. The profiles support teams to make robust judgements about the quality of services and will be used in conjunction with CQC's 'guidance about compliance' documents¹. Information from the survey will be mapped to relevant essential standards as described in the compliance documents. The QRPs will be shared with NHS trusts and lead Commissioners. More information is available at:

<http://www.cqc.org.uk/organisations-we-regulate/registered-services/guidance-meeting-standards>

1.6 Measuring performance over time

In addition to the performance assessment, the Care Quality Commission will publish comparable data from the survey to allow trusts to make meaningful comparisons between themselves and based on reliable data. Asking each hospital trust to carry out an inpatient survey in a consistent way builds a detailed picture of patients' experiences in NHS hospital trusts. Information collected nationally in a consistent way is also essential to support public and Parliamentary accountability. The results are also used by the Department of Health for performance assessment, improvement and regulatory purposes. These include the NHS Outcomes Framework (domain 4: Ensuring patients have a positive experience), the DH overall patient experience measure, the NHS Performance Framework, the cross-Whitehall Public Services Transparency Framework, a patient experience national CQUIN goal and NICE Quality Standards.

¹ These documents provide guidance to help providers of health and adult social care to comply with the Health and Social Care Act 2008 (Regulated Activities) Regulations 2010 and the Care Quality Commission (Registration) Regulations 2009.

The Care Quality Commission intends to archive the survey data with the UK Data Archive after the analysis is completed and published. This will be done with appropriate safeguards that ensure patient confidentiality.

1.7 Commissioning for Quality and Innovation (CQUIN)

Trusts will need to share their inpatient survey data with their lead commissioner and agree whether they have earned CQUIN payments for the national goal on improving responsiveness to the personal needs of patients. We will send the scored benchmark data for this purpose, as soon as it is available. Agreement with your commissioner must be reached by the end of the 2012/13 contract year in order for CQUIN payments to be made.

1.8 Embargo on results

Trust-level findings for the NHS adult inpatient survey 2012 should not be released outside of the trust until the national results are published by the Care Quality Commission. Please continue to use the results from your in-house survey teams or approved contractor to improve services, but wait until the survey results for all trusts are published by the Care Quality Commission before promoting your results in any way (either on your website, in press releases or any other external publicity) to the local community and media. You will receive, along with communications staff in your trust, advance notice of the publication date and will have time to prepare for your local announcements once the embargo is lifted.

1.9 Basic requirements for NHS trust inpatient survey

For comparisons between and within trusts to be accurate, fair and effective, it is essential that the surveys are carried out using a standard procedure in all NHS trusts. Those standards are set out in detail later in this document. In summary, they are as follows:

- You must let the Co-ordination Centre know your two trust contacts, their job titles, phone numbers and email addresses as soon as possible, and no later than 31st August 2012 to allow us to communicate vital information about the 2012 inpatient survey to you. (e-mail: **acute.data@pickereurope.ac.uk**)
- You must contact the Co-ordination Centre, as soon as possible, and no later than 31st August 2012, to tell us who is carrying out your survey (i.e. whether it will be carried out by an approved contractor or in-house), email: **acute.data@pickereurope.ac.uk**
- The survey must be carried out using a postal questionnaire
- The samples of patients must consist of the most recent consecutive discharges up to the last day of either **June 2012** or **July 2012** or **August 2012** as outlined in *Section 10 – Compiling a list of patients*
- The sampling procedure set out in this guidance must be followed. To do this, you will need to work closely with the person who draws the sample, and check carefully that this guidance has been adhered to. For further details see *Section 10 – Compiling a list of patients*
- Sample data (your anonymised ‘sample file’) must be submitted to the Co-ordination Centre for final checks before mailing as outlined in *Section 11 – Final sampling inspection by the Co-ordination Centre*. You should aim to submit these sample files to us between **10th September** and **5th October 2012** to allow sufficient fieldwork period to maximise your response rates
- You should aim to obtain the highest response rate possible. For this survey, the target response rate is 60% (that is, you should get 500 returned questionnaires from the 850

mailed out). Three mailings will be necessary for most trusts to achieve this target. However, trusts should facilitate higher response rates through maximising their collection period by commencing work as soon as possible, and by publicising the survey to staff, patients and the community. Weekly submissions of details of response rates and helpline calls to the Co-ordination Centre will start from **27th September 2012**. A spreadsheet has been created for this purpose. For further details see Section 12 – Weekly monitoring

- The questionnaire must include the 78 core questions. See *Section 14 - The core questions and question bank*
- The standard covering letters and reminder letters (which can be found in the Inpatients section of the NHS Surveys website) must be used as outlined in *Section 15 – Materials*
- Two reminders must be sent to non-responders, even if a 60% response rate is already achieved. These procedures are outlined in *Section 16.7 – Sending out reminders*
- A paper copy of the questionnaire you used should be submitted to the Co-ordination by **30th November 2012**, as detailed in *Section 3.1 – Changes for the 2012 inpatient survey*
- The final data must be entered and coded as specified in *Sections 17.1 – Entering data from the core questionnaire, 17.2 – Entering data from enhanced questionnaires, 17.3 – Entering written comments ('free text') from patients and 17.4 – Coding data before submitting it to the Co-ordination Centre.*
- The final data from the core questions, and the required information about the patient sample, must be submitted to the Co-ordination Centre in the form outlined in *Section 17.5 – Submitting data to the Co-ordination Centre by 11th January 2013*
- The free text comments must also be submitted to the Co-ordination Centre. These should be included as part of the final data file. See *Section 17.3 – Entering written comments ('free text') from patients.*
- You must keep hard paper copies (or scanned images of all of the pages of the questionnaires, including the front page) of all questionnaires returned to you until **26th April 2013** but please do not send these to the Co-ordination Centre. These returned questionnaires may be needed to audit the data sent to the Co-ordination Centre.

1.10 Why you need this guide

Trusts have the option of conducting the survey in-house or using an approved contractor (see Section 4). Whichever route you take, you will need to address the guidance in sections 1 to 13 and 18 to 20 of this guide. Sections 15, 16 and 17 cover the practicalities of mailing out the survey, following-up responses and processing data, and submitting it to the Co-ordination Centre. These sections will be most relevant to approved contractors, or trusts undertaking the surveys themselves. Section 14 contains details of the questions in the core and bank questionnaires. Please discuss questionnaire content with your contractor if you are using an approved contractor.

2 Setting up a project team

Whether you choose to do the survey in-house, or to use an approved contractor, we recommend you set up a project team to assist you. The best way to ensure that your survey is a success is to work hard *in the beginning* to involve those people who have the most impact on patients' experiences and who will be responsible for responding to the results of the survey.

We suggest:

- **Establishing a workgroup.** Put together a small team of people who are key stakeholders and involve them in decisions. Groups to consider include:
 - Caldicott Guardian
 - Board members
 - Doctors, nurses and other health care staff
 - Members of patient groups with a special interest in the trust
 - Patients and carers
 - Medical records personnel or Patient Administration System (PAS) staff
 - Managers
 - Staff or directors responsible for:
 - Clinical governance
 - Patient advice and liaison service (PALS)
 - Quality improvement
 - Strategic planning.
- **Involving the person responsible for drawing the patient sample in planning meetings.** It is essential that this person, and their line manager, understand the purpose of the survey and the importance of drawing the sample correctly.
- **Keeping everyone informed.** Notify as many people as possible about ideas and activities. All departments in the trust should be made aware when a survey is being conducted, in case patients contact the trust asking questions about the survey they have received. For more information on publicising the survey see Section 13.
- **Not overlooking front-line staff.** These people have the most direct impact on patients' experiences.

3 What's new for 2012?

3.1 Changes for the 2012 inpatient survey

Changes to the questionnaire – questions added, modified and removed

The **2012 inpatient questionnaire** has been kept as similar as possible to the 2011 inpatient questionnaire to allow comparisons to be made between survey years. There are now 78 core questions, seven fewer questions than last year. When published, the development report will contain complete documentation about all changes made to the questionnaire and can be found on the NHS Surveys website at <http://www.nhssurveys.org/surveys/647>. A summary of the changes made to the core questionnaire are listed below:

Six questions have been added to the core questionnaire:

- Q8. In your opinion, had the specialist you saw in hospital been given all of the necessary information about your condition or illness from the person who referred you?
- Q50. Were you given enough notice about when you were going to be discharged?
- Q60. Did hospital staff take your family or home situation into account when planning your discharge?
- Q63. Did hospital staff discuss with you whether you would need any additional equipment in your home or any adaptations made to your home, after leaving hospital?
- Q64. Did hospital staff discuss with you whether you may need any further health or social care services after leaving hospital? (e.g. services from a GP, physiotherapist or community nurse, or assistance from social services or the voluntary sector).
- Q68: Overall...

Three questions carried in the 2011 inpatient core questionnaire were modified for the 2012 survey:

- Q49. Did you feel you were involved in decisions about your discharge from hospital?
- Q58. Were you given clear written or printed information about your medicines?
- Q70. Did you see, or were you given, any information explaining how to complain to the hospital about the care you received?

Thirteen questions have been removed from the core questionnaire¹:

- Following arrival at the hospital, how long did you wait before being admitted to a bed on a ward?
- Who referred you to see a specialist?
- Overall, from the time you first talked to this health professional about being referred to a hospital, how long did you wait to be admitted to hospital?
- Were you given a choice of admission dates?
- When you were first admitted, did you mind sharing a sleeping area, for example a room or bay, with patients of the opposite sex?
- After you moved, did you mind sharing a sleeping area, for example a room or bay, with patients of the opposite sex?
- Did you have somewhere to keep your personal belongings whilst on the ward?

¹ A number of these will still be available in the question bank. See the Development Report for the NHS Adult Inpatient Survey 2012, for more details: <http://www.nhssurveys.org/surveys/647>

- Did you see any posters or leaflets on the ward asking patients and visitors to wash their hands or to use hand-wash gels?
- As far as you know, did doctors wash or clean their hands between touching patients?
- As far as you know, did nurses wash or clean their hands between touching patients?
- If your family or someone else close to you wanted to talk to a doctor, did they have enough opportunity to do so?
- How would you rate how well the doctors and nurses worked together?
- Overall, how would you rate the care you received?

Changes to instructions for completing the questionnaire

This year respondents will be asked to cross, rather than tick boxes (e.g. instead of) in the instructions for completing the questionnaire contained on the front page of the questionnaire.

Approved contractors

The contact details of the approved contractors have been updated for 2012 and can be found in Section 5. If you are using a contractor, you must use one of the approved contractors listed in this guidance document.

General Medical Practice Code (GMPC)

For 2012 we will require GMPC in both sample and final data submissions. This is the GP Practice code where the patient is registered e.g. A81001 is the Densham surgery in Stockton.

Patient record number

The format of the patient record number has been revised for 2012. The number should be in the format IP12XXXNNNN where XXX is your 3-digit trust code and NNNN is the 4 digit number relating to your sampled patients, e.g.

IP12	ABC	0001
↑	↑	↑
Inpatient survey 2012	Trust Code for your Trust	Unique patient ID

Free Text Comments

For 2012, patients' written comments ('free text') should be submitted to the Co-ordination Centre in an anonymised format along with the final data file. This is discussed further in Section 17.3.

Copy of questionnaire

Please could you send a hard copy of your questionnaire by 30th November 2012 to:

Inpatient Survey 2012
 Co-ordination Centre for Patient Survey Programme
 Buxton Court
 3 West Way
 Oxford
 OX2 0JB

4 Deciding whether to use an approved contractor or carry out the survey in-house

Trusts may choose to carry out their surveys in-house, or to commission an approved contractor to carry out the work for them. We do not recommend you carry out large-scale surveys such as these in-house if you do not already have experience in carrying out surveys. Tracking large surveys with appropriate follow-up is an administratively complex task requiring dedicated resources for several months. Getting systematic feedback from patients requires money, resources and staff time.

Please remember that if the survey is not undertaken in accordance with the guidance manual, the results for your trust might not be eligible for inclusion in the CQC publication, the QRP and for use by others such as NHS Choices and the Department of Health for their performance assessment, improvement and regulatory purposes. This means that the data will be far less useful for you, and may not be available on the CQC website to be viewed by the public. For more information on this, and on the use of approved contractors, please see the Q&A on the NHS surveys website at: http://www.nhssurveys.org/Filestore/documents/20120704_FAQs_on_fair_data_processing_draft4.pdf

Considering the following can help you decide whether it makes sense for your trust to conduct the survey in-house or to commission an approved contractor:

- Costs
- Internal resources/expertise
- Timing
- Quality and confidence in the findings

4.1 Costs

The financial resources needed to carry out a survey in-house are often under-estimated. The following is a list of the main items of expenditure for a postal survey, including the two reminders that must be sent out for all NHS trust surveys.

Staff time

This is one of the largest expenditures, but it is sometimes overlooked. Be sure to include the cost of staff time, including salary and fringe benefits, and time spent away from other work. Please note that weekly submissions of data on response rates and use of the helpline facility will be required for each trust taking part in the inpatient survey 2012, involving increased staff time for both trusts and contractors.

Stationery and postage

You will need to cover the cost of stationery and postage for three mailings. The first mailing will go out to 850 patients and the second and third mailings will be sent only to non-responders. (See Section 15 for more details.) You will need to cover the cost of second class postage for three mailings, two of which will include the questionnaire.

Freepost licence

There is a charge for obtaining a freepost licence which enables you to print a freepost address on return envelopes so that respondents can send back completed questionnaires at no cost to

themselves. You will also be charged for each returned questionnaire. (For details on how to set up a FREEPOST address, see Section 16.1).

PO Box

For confidentiality reasons, there should be no indication on the outer envelopes that the documentation enclosed relates to healthcare in any way. Consequently in-house trusts are advised to set up a PO Box so that mail which is undelivered can be returned to sender. There is a fee for setting up a PO Box. (For details on how to set up a PO Box see Section 16.2).

Freephone service

This service gives patients easy access to advice and staff who can reassure them on any concerns they have about the survey. The cost of setting up such a service, and of staff time in responding, needs to be included. (For further details see Section 16.3).

Data entry

If the data are entered manually, you will need to allow enough staff time for this, and for checking the accuracy of the data file. Alternatively, a data processing or scanning company may be contracted to process the data for which there would be a charge. We recommend you allow enough time for agreeing the details of a contract with a company and discussing their specific requirements (such as the size of the response boxes). If you use in-house scanning equipment, allow time for setting it up to read the data correctly from questionnaires.

Design and production of reports

This requires a considerable amount of skilled staff time.

4.2 Internal resources

To carry out a survey effectively, the following areas of experience and skills are needed:

- Administration of postal surveys
- Communication with and co-ordination of multi-disciplinary teams
- Data entry, validation and cleaning
- Data analysis and interpretation, and familiarity with a statistical computing package
- Report writing.

4.3 Timing

It is often possible to carry out small, localised surveys quickly in-house. However, even in the best of situations, other demands on staff can side-track them into other work. If you commission an approved contractor to carry out the survey, you should ensure that appropriate and realistic deadlines are set. The deadlines set by the Co-ordination Centre must be met in order for data to be submitted in time to the Care Quality Commission.

4.4 Quality and confidence in the findings

As mentioned above, it is important to remember that the results of the survey will be used not only within the trust to identify areas for improvement but also by the Care Quality Commission and

Department of Health to contribute to performance assessment and possibly for other uses, such as the NHS Choices website.

It is therefore essential that the data are as accurate and reliable as possible and that the information is gathered in the same way for all trusts. Using the expertise of an approved contractor may add credibility to the survey findings in the eyes of staff, patients and the general public.

When you have decided who will carry out your survey, i.e. an in-house team or an approved contractor, you must inform the Co-ordination Centre as soon as possible, and no later than 31st August 2012.

5 Commissioning a survey from an approved contractor

The framework agreement set up by the Care Quality Commission covers the core survey process. Approved contractors are expected to provide the following services:

- Advising on sampling, providing support to trusts for sampling
- Printing questionnaires, covering letters, reminders and providing consumables
- Handling receipt of questionnaires, liaising with trusts regarding non-responses and reminders
- Support to ensure good response rates, e.g. FREEPHONE line
- Data entry, cleaning data and providing data to Co-ordination Centre by the deadline
- Preparing standard reports for trusts.

Three organisations have been approved by the Care Quality Commission to carry out surveys for the NHS adult inpatient survey 2012 (see Section 5.1 below). Trusts may commission any one of these contractors without further tendering the survey work. Before committing to a contractor, you are advised to **check exactly what is covered** within the cost quoted.

5.1 List of approved contractors

The following contractors have approved status for work on the 2012 adult inpatient survey. If a trust chooses to use a contractor, it is a requirement of the survey that one of the following approved contractors is used:

Patient Perspective

Contacts: Stephen Bruster, Chris Henderson

Standingford House
26 Cave Street
Oxford
OX4 1BA

Tel: 01865 205100

Fax: 01865 205111

E-mail: stephen.bruster@PatientPerspective.org; chris.henderson@PatientPerspective.org

Website: www.PatientPerspective.org

Picker Institute Europe

Contacts: Tim Markham, Lucas Daly, Yasmin Jennings and Matt Cadby

Buxton Court
3 West Way
Oxford
OX2 0JB

Tel: 01865 208100

Fax: 01865 208101

E-mail: surveys.team@pickereurope.ac.uk

Website: www.pickereurope.org

Quality Health

Contacts: Dr Reg Race, Kerry Hibberd, Kimberley Pollard and Lucinda Phillips

Unit 1 Holmewood Business Park
Chesterfield Road
Holmewood
Chesterfield
Derbyshire
S42 5US
Tel: 01246 856263 Fax: 01246 855897

Email: reg.race@quality-health.co.uk; kerry.hibberd@quality-health.co.uk;
kimberley.pollard@quality-health.co.uk; lucinda.phillips@quality-health.co.uk
Website: www.quality-health.co.uk

5.2 Contracts with survey contractors

The Care Quality Commission has produced a document that we shall refer to as the 'service contract', for NHS trusts to use as a template agreement when providing sampling details to their approved contractor. The CQC strongly recommend that the contract template is reviewed by your trust and legal advice is obtained to ensure each clause is relevant and accepted by the trust. Further details on this document in relation to data protection issues are available in Section 6 (see in particular Sections 6.4 and Section 6.7).

We suggest that the service contract is used as either an arrangement separate to the financial agreement made between a trust and an approved contractor when commissioning that contractor, or combined with the financial agreement to minimise the administrative burden. In either case, trusts should specify the following when confirming the requirements of the contractor:

- The groups, and numbers, of patients to be surveyed
- The survey methodology (i.e. postal questionnaire with two reminders to non-responders)
- Exactly what the contractor and the trust are responsible for in carrying out the survey project (division of responsibilities)
- The main contact at the contractor and the individual at the trust responsible for managing the project
- A timetable showing the dates when each task is to be carried out and by whom
- The version of the questionnaire to be used (core or enhanced)
- The outputs of the project. That is, types of and numbers of reports to be delivered and details of any presentations to be carried out by approved contractors
- The costs and a payment schedule.

6 Data protection and confidentiality

When carrying out your survey, you will need to ensure that you comply with the Data Protection Act 1998, and ensure that all responses are kept confidential. **If you have not already done so, please ensure that you add research to your Data Protection Act registration, as one of the purposes for processing personal data supplied by data subjects.** You will also need to comply with the NHS Code of Practice on Confidentiality (2003)¹, which incorporates the Caldicott principles (see textbox below). You should take particular care to ensure that your use of patient data in carrying out the survey complies with these 6 principles. In particular, you should be aware of the flows of patient data, and the issues which these present.

The Caldicott Principles

Each NHS trust has a Caldicott Guardian who is responsible for overseeing proper use of patient data. They have to ensure that any use of patient data conforms to the following principles:

- **Principle 1:** Individuals, departments and organisations must justify the purpose(s) for which information is required
- **Principle 2:** Don't use patient-identifiable information unless it is absolutely necessary
- **Principle 3:** Use the minimum necessary patient-identifiable information
- **Principle 4:** Access to patient-identifiable information should be on a strict need-to-know basis
- **Principle 5:** Everyone should be aware of their responsibilities
- **Principle 6:** Understand and comply with the law

It is your legal responsibility to ensure that you meet any guarantees of anonymity or confidentiality made in covering letters and on the questionnaire form. It will also be necessary to establish appropriate contractual arrangements with any contractors (see Section 5.2). Your trust's Caldicott Guardian and legal advisors should advise you on these matters.

Guidelines on the use and security of the data collected have been agreed by the Care Quality Commission and the Co-ordination Centre for the NHS Patient Survey Programme. These guidelines will help to ensure that data are handled in a manner most in keeping with the spirit of the Data Protection Act 1998 and the Market Research Society's *Guidelines for social research* (2005)². They have implications for approved contractors and for NHS trusts conducting surveys in-house.

Information about the Data Protection Act 1998 can be found at the ICO – Information Commissioner's Office: <http://www.ico.gov.uk>

Further guidance can be found on the Market Research Society website: http://www.mrs.org.uk/standards/data_protection/

¹ http://www.dh.gov.uk/prod_consum_dh/idcplg?IdcService=GET_FILE&dID=9722&Rendition=Web

² http://www.the-sra.org.uk/documents/pdfs/sra_data_protection.pdf

6.1 Statements of compliance with data protection

In-house surveys

Each NHS trust has a Caldicott Guardian responsible for overseeing proper use of patient data. If you are conducting the survey in-house then, before mailing out the sample, you must submit a formal declaration (see Appendices 3 and 4), signed by the Caldicott Guardian and survey lead(s) for the trust, to the Co-ordination Centre. This declaration will certify that data shall only be displayed, reported, or disseminated in compliance with the guidelines (see Section 6.9). Templates for these declarations are available on the NHS Surveys website: <http://www.nhssurveys.org/surveys/647>. You must wait for confirmation of receipt from the Co-ordination Centre before you mail out your sample.

If the Caldicott Guardian is unable to make such a declaration, then the trust must use an approved contractor to ensure that appropriate standards of confidentiality and data protection are maintained.

Approved contractors

The framework agreement between the approved contractors and the Care Quality Commission contains clauses stating that the approved contractor will comply with the Data Protection Act so no declaration is required if a trust appoints a contractor from the approved list.

6.2 Section 251 Approval

Approval for the NHS Adult Inpatient Survey 2012 was sought this year, as it was last year, under section 251 of the NHS Act 2006. The survey methodology was reviewed by the National Information Governance Board (NIGB) for approval. Their Ethics and Confidentiality Committee (ECC) granted a recommendation of support on 9th July 2012. However, this recommendation does not cover the transfer of patient identifiable information where a patient has indicated dissent - by this we mean instances where a patient has indicated that they do not want their information to be shared for purposes such as patient surveys, or specifically stated that they do not want their details shared outside of the trust.

Consequently, if any patients have indicated that they do not want their records used for secondary purposes (e.g. they have asked to be excluded from all surveys or they do not want their address details shared for any reason other than clinical care), please ensure that these patients are excluded from your mailing list. This should be done using your local records.

However, there is evidence available from research to suggest that a considerable degree of bias is likely to be introduced depending on the stage at which 'dissent' is recorded, the severity of patients' conditions, and their understanding of the aim and purpose of the research or evaluation. Such bias would negatively impact on the results for a trust.

In order to keep the potential for bias to a minimum, we request that trusts ensure that where any opportunity is provided for patients to opt out, patients are made aware of the purpose of this specific use of the data, including the aim of the NHS National Patient Survey Programme and how data will be used by the Care Quality Commission (and others) to assess and improve the care that is provided in the future. Information on the National Patient Survey Programme is available on the CQC website here: www.cqc.org.uk/public/reports-surveys-and-reviews/surveys

Please discuss this issue with your Caldicott Guardian to ensure that any patients who have indicated that they do not wish to have their details shared for purposes such as this

survey, yet may have sufficient address details visible in PAS, are not included in the sample that is submitted to contractors.

For more information on the fair processing of data, please see the Q&A on the NHS surveys website at:

http://www.nhssurveys.org/Filestore/documents/20120704_FAQs_on_fair_data_processing_draft4.pdf

6.3 Keeping patient mailing data and sample data separate

For patient confidentiality reasons, patient responses must never be matched to the patients that made them. The best way to ensure this is to store patient names and address details separately from sample information or survey response data. **For this reason, we strongly recommend that once the sample has been returned from DBS and the 850 patients are finalised, patient names, addresses and postcodes are removed from the sample file to an “Inpatient 2012_mailing data” file.** Before this is done, it is essential each patient is provided with a unique number (a patient record number) and that this number is available and correctly matched on both the ‘Inpatient 2012_mailing data’ file and the sample information file (the ‘sample file’) (see Sections 10.5 and 10.9).

6.4 Mailing questionnaires to patients

When working with approved contractors, trusts must be aware of any implications for data protection when deciding who should mail out the questionnaires. There are two common methods practised by trusts, and advised by the Care Quality Commission, when working with approved contractors:

- 1. The contractor mails out the questionnaires.** If a contractor is going to be mailing out questionnaires on behalf of a trust, this will require the trust to share patient names and address details with their approved contractor. This method is only possible if the contractor is carrying out the work under a service contract, which can be set up with the agreement of the trust’s Caldicott Guardian. The Care Quality Commission has provided the template service contract for trusts and approved contractors carrying out the survey, to avoid the need for each trust to develop its own arrangements (see Sections 5.2 and 6.7). It is strongly recommended that these documents are reviewed by each trust and approved contractor to ensure they are satisfied with them, and to amend where required. When personal data is shared with contractors, trusts must adhere to the principles outlined in Sections 6.5 and 6.6 below.
- 2. The trust mails out the questionnaires.** If trusts are working without a service contract¹, then they must conduct the survey mailing in-house. The contractor will deliver pre-packed envelopes (clearly marked with the patient record number) containing questionnaires, covering letters and FREEPOST envelopes to the trust. The trust must then attach number-matched address labels to the envelopes and send them out to patients. Completed questionnaires can then be returned to the contractor and, by checking the record numbers on returned questionnaires, they can inform the trust which patients need to be sent reminders. This process is described in more detail in Sections 16.5-16.7.

¹ In this case a trust would have no recourse if any breach of the Data Protection Act were to occur.

6.5 Sharing personal data (patients' names and addresses)

Please note that under the data protection guidelines for patient surveys, the following principles **must** be followed:

- Trusts/contractors must undertake to keep their products up to date to ensure that security is effective and must strictly observe the following guidance. The requirements that dictate the guidelines include the Data Protection Act 1998, the Health and Social Care Act (Community Health and Standards) Act 2003, the NHS confidentiality code of practice 2003¹ (which incorporates the Caldicott principles).
- The Care Quality Commission strongly recommends that personal data such as names and addresses must be sent by trusts to contractors securely, either by post or over the Internet using an encrypted session.
 - **By post:** Trusts should send the personal data to their contractor in the form of an encrypted data file. We strongly recommend that the **256-bit AES** (Advanced Encryption Standard) encryption algorithm should be used for this purpose – see Section 6.6 below for further information on this. The password should be verbally given to a named individual at the contractor. **Passwords should never be written on CD-ROMs or diskettes or otherwise included with encrypted material sent through the post.** The encrypted database should be saved onto a CD-ROM and placed in a single sealed envelope or other container, annotated “Addressee only”. This should be sent to the contractor by Royal Mail Special Delivery or through an approved courier service²; personal data should **not** be sent by recorded delivery.
 - **Over the Internet:** An encrypted session based on the Transport Layer Security (TLS) or Secure Sockets Layer (SSL) protocol (for example as with HTTPS or SFTP) must be used. A key size of 256 bits or greater should be used. This is to ensure a high level of security, to protect against any accidental or intentional interception during the transfer of patients' details. Approved contractors should be able to provide guidance on the use of an encrypted session to trusts.
- As the owners of the data, the method for transferring patient samples is ultimately the trust's decision because the trust remains legally responsible for the security and processing of the information it shares. The Care Quality Commission strongly recommends the two methods described above. Trusts wishing to send information by encrypted email will need to seek their own specialist advice. Guidance on best practice in encryption is available from NHS Connecting for Health³.

Remember

If the data contains patient names and addresses, this can only be sent to the contractor by encrypted CD-ROM, or over the internet via a Care Quality Commission approved encrypted method.

¹ http://www.dh.gov.uk/prod_consum_dh/idcplg?IdcService=GET_FILE&dID=9722&Rendition=Web

² Contact the Care Quality Commission for more detail on approved couriers: patient.survey@cqc.org.uk

³ http://nww.connectingforhealth.nhs.uk/igsecurity/gpg/gpg/NPFIT-FNT-TO-IG-GPG-0004.01%20GPG_%20%20NHS%20Cryptographic%20Algorithms.pdf – this document is only accessible from NHSnet.

6.6 Encryption of personal data

Any patient identifiable information sent between trusts and contractors should be in an encrypted format with password protection to help ensure good standards of information security. Many different encryption algorithms exist and not all of these are suitable, so both the Co-ordination Centre and the Care Quality Commission very strongly recommend the use of the **256-bit AES** (Advanced Encryption Standard) algorithm. There are several software tools that can be used to encrypt data in this way, the most commonly available of these being WinZip® (v9 and above)¹.

6.7 Contractor responsibilities (service contract)

As mentioned in Section 5.2, a service contract has been drafted by the Care Quality Commission for use in the National Patient Survey Programme. By signing it, in addition to the points mentioned in Section 5.2, the approved contractor is obliged to keep information confidential at all times, and to comply with the Data Protection Act 1998. The contract describes how patients' personal data will be sent to the approved contractor, and how the data can be used. It provides the trust with some recourse if any breach of the Data Protection Act were to occur, as a result of the actions of the approved contractor. The document also ensures that approved contractor staff members sign and abide by the contract.

The service contract in Word format is available on the NHS Surveys website:

<http://www.nhssurveys.org/surveys/647>

The service contract is designed to be used as a template contract; trusts and approved contractors may agree on amendments to the wording and content when using them.

6.8 Assurances of patient anonymity

In-house surveys

It is important to ensure that any claims you make about patient anonymity are accurate; you are obliged by law to honour any statements that you do make. In most cases where a survey is carried out in-house, it is not accurate to tell patients that their responses will be anonymous. The person who receives the completed questionnaires is usually able to match these responses to patient names and addresses.

Approved contractors

Patient anonymity can be achieved if there is a clear separation between the information seen by an approved contractor and the information held by the trust. Patients' names and addresses will be seen by trust staff when generating the sample, while contractor staff will usually possess both patient details and patient responses. As long as the response data supplied to trusts do not include patient record numbers or any other detail that allows individuals to be identified or linked, it can reasonably be claimed, with regard to the trust and trust staff, that patients' responses are anonymous.

¹ <http://www.winzip.com/>

6.9 Patient confidentiality

It is essential that any patient survey is conducted in such a way that patient confidentiality is respected and given a high priority. The covering letters that accompany the mailed questionnaires inform patients that their name and address will never be linked to their responses. Furthermore, patients' responses must not be presented to anyone in a way that allows individuals to be identified. For example, if a patient is known to have stayed on a particular ward, and his or her year of birth, sex and ethnic category are known from their survey responses, it might be possible to use this information to identify them. It would be unlawful to provide staff who may have had contact with respondents any information that would allow these respondents to be identified. The following recommendations are made:

Trust level

- 1) The raw data set should not be provided to any member of staff at the trust who does not need to view it, i.e. those who are not directly working on the project
- 2) If data are to be presented to other trust staff, only the aggregated totals for each question should be provided. If analysis by subgroup is carried out, the results for any group consisting of fewer than **30 respondents** should be suppressed (replaced by a dash). The data should be presented as in the following example. In this case, responses for the 'Mixed' and 'Asian' ethnic categories are suppressed (though the subgroup totals are shown):

Ethnic category	Q16. Were you ever bothered by noise at night from hospital staff?		
	Yes	No	Total responses
	%	%	n
White	81	19	261
Mixed / Multiple	-	-	8
Asian	-	-	18
Black / African / Caribbean	79	21	52
Other	85	15	36

- 3) Do not present response information (including comments) in a form that allows an individual patient to be identified by the group receiving the information. For example, if you are presenting the results of a small number of patients, make sure that it will not be possible for the reader/audience to identify individual patients from their responses, and pay particular attention to the patients' free text comments in this context.
- 4) The electronic file containing the patients' names and addresses should be stored securely (i.e. password protected).

Approved contractor

- 1) Approved contractors must not provide raw data to the trust as a matter of course.
- 2) If the trust has a particular need for the raw data collected by the survey, the contractor may provide an abridged version of this dataset to the trust upon request, providing that the steps below are undertaken first:
 - a. The contractor must delete the two variables pertaining to ethnicity (e.g. both sample and response variables)
 - b. The contractor must band year of birth into five age groups (16-35, 36-50, 51-65, 66-80, 80+). This process should be repeated separately for both sample and

- response variables. The original year of birth variables (e.g. those specifying an exact year rather than age group) must then be deleted
- c. Additional information specific to a survey that can be used to identify individual patients must also be removed. For example, admission and discharge dates on the NHS adult inpatient survey must be removed but length of stay can be calculated from the admission and discharge dates and provided to trusts. Route of admission to hospital does not need to be excluded unless the trust had fewer than 30 respondents admitted for an emergency or urgent admission, or from a waiting list or planned admission
 - d. Verbatim comments that could lead to any staff identifying respondents must be removed, e.g. those mentioning patient, staff, ward, or unit names¹
 - e. The contractor must have received confirmation from the trust that the names and addresses of the sampled patients have been destroyed; otherwise they will be able to identify individual patients by matching up the patient record numbers on the name and address list to those in the raw data file.

These steps MUST be followed before supplying raw data to trusts. This is to prevent the disclosure of a patients' identity by specific demographic factors. Different arrangements govern the supply of raw data to the Co-ordination Centre. The arrangements are described in full in Section 17. The response data will be anonymous when passed to the Co-ordination Centre and Care Quality Commission, and published and archived results will not identify patients.

- 3) If data are to be presented to trust staff, only the aggregated totals for each question should be provided. If analysis by subgroup is carried out, the results for any group consisting of fewer than **30 respondents** should be suppressed. The data should be presented as in the following example. In this case responses for the 'Mixed / Multiple' and 'Asian' ethnic categories are suppressed (though sub-group totals are shown):

Ethnic category	Q16. Were you ever bothered by noise at night from hospital staff?		
	Yes	No	Total responses
	%	%	n
White	81	19	261
Mixed / Multiple	-	-	8
Asian	-	-	18
Black / African / Caribbean	79	21	52
Other	85	15	36

- 4) Do not present response information (including comments) in a form that allows an individual patient to be identified by the group receiving the information. For example, if you are presenting the results of a small number of patients, make sure that it will not be possible for the reader/audience to identify individual patients from their responses, and pay particular attention to the patients' free text comments in this context.
- 5) The electronic file containing the patients' names and addresses should be stored securely (i.e. password protected). Access to the file should be given only to those individuals who have signed the service contract.

¹ Please be aware that there are exemptions allowing disclosure, such as the prevention of crime exemption which **might** allow disclosure of free text describing criminal matters actual or threatened. Neither the Care Quality Commission nor the Co-ordination Centre can offer legal advice on these matters; the contractor or trust must seek its own independent legal advice before disclosing patients' comments to trusts.

6.10 Sharing of survey data between contractors

If a trust will be using a different approved contractor than in the last survey year, contractors are permitted to transfer an unabridged version of the data set if there is a clear need to use the data from the previous year's surveys to allow year-on-year comparison.

6.11 Storing completed questionnaires

Completed questionnaires must be stored in a separate location to lists of patients' names, and the questionnaires kept until **26th April 2013**. All mailing lists of patients' names and addresses should be stored on a separate computer to that containing survey data. Mailing lists of patients' names and addresses should be destroyed when the mailing process is complete.

7 Ethical issues, ethics committees and research governance

Research Ethics Committees provide independent advice to participants, researchers, care organisations and professionals on the extent to which proposals for research studies comply with recognised ethical standards. The purpose of Research Ethics Committees in reviewing a proposed study is to protect the dignity, rights, safety and well-being of all actual or potential research participants. They will also seek reassurances regarding issues such as data protection, confidentiality and patient anonymity, and they will want to check that proposed research projects will not cause physical or mental harm to patients.

7.1 Ethical approval for the inpatient survey

Research Ethics Committee (REC) approval has been obtained for the NHS Adult Inpatient Survey 2012 and a substantial amendment submitted for changes regarding the survey, all of which can be downloaded from the NHS Surveys website: <http://www.nhssurveys.org/surveys/647>. In order to comply with the ethical approval, the survey must be carried out according to the guidelines set out in this document.

Trusts do not, therefore, need to seek individual ethical approval for this survey. If you wish, you can send your Local Research Ethics Committee(s) (LREC) a copy of the REC approval letter, but you are not required to do this and you do not need to wait for confirmation or approval from the LREC before starting your survey.

Your trust should notify the relevant Research and Development (R&D) office that ethical approval has been obtained for the 2012 Inpatient Survey. The REC letter of approval can be found on the NHS Surveys website (see link above).

Further information on the ethical approval process can be found on the National Research Ethics Service website: <http://www.nres.nhs.uk/home/> or by e-mailing nres.queries@nhs.net

7.2 Research governance requirements

The *Research Governance Framework* (2002, 2003, 2005) aims to ensure that health and social care research is conducted to high scientific and ethical standards. It spells out standards and the responsibilities of various parties involved in the research. One of the main purposes of the framework is to reduce unacceptable variations in research practice.

The Care Quality Commission, as sponsor of this national survey, has taken steps to ensure that principles of research governance and ethics are followed thoroughly. A standard core questionnaire and guidance notes are an important step in ensuring that the survey is carried out by all trusts in the same way without any variations.

The Department of Health has confirmed to the Care Quality Commission that it would be inappropriate for individual trusts to follow the same local research governance processes as they would if the survey were a study the trust is sponsoring. As this national inpatient survey has research ethics committee approval and the Care Quality Commission takes responsibility for it as sponsor, this would duplicate work and delay implementation unnecessarily.

The following table (Table 1, below) has been prepared by the Care Quality Commission and is taken from Section 3.10 of the *Research Governance Framework for health and social care (2005)*. The left-hand column sets out the responsibilities of organisations providing care and the right-hand column sets out the arrangements made by the Care Quality Commission for patient surveys. If you are required to seek approval from your research governance lead, you are advised to present this information to your Research and Development Manager in support of your request.

Table 1 – Responsibilities of NHS organisations who are carrying out research

Research Governance Framework	Care Quality Commission sponsored patient surveys
Retain responsibility for the quality of all aspects of participants' care whether or not some aspects of care are part of a research study.	<i>The survey is carried out on the experiences of patients after they have received the care so this does not apply.</i>
Be aware and maintain a record of all research undertaken through or within the organisation, including research undertaken by students as part of their training.	<i>All Chief Executives are informed of the proposals of the survey. Trusts should notify their Research and Development Managers of the survey.</i>
Ensure patients or users and carers are provided with information on research that may affect their care.	<i>The survey does not affect the care of the patients. Anonymised results are used by the Care Quality Commission and the Department of Health for performance assessment purposes, and for local quality improvement initiatives. Detailed guidance is issued to survey leads regarding the publicity of the results and its impact on patient care.</i>
Be aware of current legislation relating to research and ensure that it is implemented effectively within the organisation.	<i>This requirement is not specific to this survey.</i>
Ensure that all research involving participants for whom they are responsible has ethical approval and that someone with the authority to do so has given written permission on behalf of the care organisation before each study begins.	<i>The Care Quality Commission as sponsors of the study have sought ethics approval from MREC. There is a designated lead for each survey who is appointed by the Chief Executive.</i>
Ensure that no research with human participants, their organs, tissue or data, begins until an identified sponsor, who understands and accepts the duties set out in this framework, has confirmed it accepts responsibility for that research.	<i>The Care Quality Commission as sponsors have undertaken steps to ensure that all the duties of the sponsors listed in Section 3.8 of the Research Governance Framework are followed thoroughly.</i>
Ensure that written agreements are in place regarding responsibilities for all research involving an external partner, funder and/or sponsor, including agreement with the University or other employer in relation to student supervision.	<i>Detailed guidance is issued to all the trusts, which spells out the responsibilities of all parties involved in the survey.</i>
Maintain the necessary links with clinical governance and/or best value processes.	<i>The guidance notes very strongly recommend the trusts to maintain these links and follow best practice evidence.</i>

Continued...

Research Governance Framework	Care Quality Commission sponsored patient surveys
Ensure that, whenever they are to interact with individuals in a way, which has a direct bearing on the quality of their care, non-NHS employed researchers hold honorary NHS contracts and there is clear accountability and understanding of responsibilities. ¹	<i>In situations where trusts opt to use the services of an external contractor to draw the sample for the survey, the contractor is required to enter into an appropriate contract with the trust. These procedures are specifically detailed in the guidance notes.</i>
Put and keep in place systems to identify and learn from errors and failures.	<i>The Care Quality Commission also undertakes consultations with the trusts in order to ensure that the errors and failures are reported back to the Care Quality Commission. The survey programme is constantly evaluated and reviewed in light of these.</i>
Put and keep in place systems to process, address and learn lessons from complaints arising from any research work being undertaken through or within the organisation.	<i>This requirement is not specific to this survey.</i>
Ensure that significant lessons learnt from complaints and from internal enquiries are communicated to funders, sponsors and other partners.	<i>The Care Quality Commission maintains a helpline facility, which can be used by patients or trusts to report any complaints. Similar arrangements are in place with the Co-ordination Centre who are commissioned by the Care Quality Commission to co-ordinate the patient surveys.</i>
Ensure that any research-related adverse events are included in reports to the National Patient Safety Agency in line with the standard procedures of the organisation; or to the systems for adverse events reporting in social care.	<i>Not applicable to the patient survey. Patient safety is not compromised, this being a postal survey.</i>
Permit and assist with any monitoring, auditing or inspection required by relevant authorities.	<i>The results of the surveys are used for monitoring of trusts performance by the Care Quality Commission</i>

¹ When universities and hospitals employ staff on joint or dual contracts, they are expected to make joint arrangements for accountability and management. See *A Review of Appraisal, Disciplinary and Reporting Arrangements for Senior NHS and University Staff with Academic and Clinical Duties*, a report to the Secretary of State for Education and Skills by Professor Sir Brian Follett and Michael Paulson-Ellis, September 2001 (The Follett Report).

8 Collecting data from non-English-speaking populations

The patients who respond to your survey should be representative of all of the patients who use the trust, so it is important that groups with limited understanding of English are not excluded. Questions in the core questionnaire and the question bank have been written in as **plain language** as possible to facilitate optimum understanding by all respondents. The questions have also been tested with patients from a range of ethnic categories.

For this survey, translated questionnaires are not being mailed to patients since it is not possible to identify non-English-speaking patients, or their specific language, from patient records before questionnaires are sent out because language spoken is not usually included on patient administrative systems. Therefore, the first contact with them will have to be in English.

There are a number of strategies you can adopt to facilitate the process of collecting the views of people with a limited understanding of English within this survey:

- It is good practice to offer help or interpretation services to those who might require them. You can do this by subscribing to a specialist interpreting service, most of which offer telephone interpretation on a pay-as-you-go basis. This normally involves a three-way conversation between you (or your helpline operator), the patient and the interpreter. Your trust may already have arrangements with such a service. If you are a trust that intends to conduct the survey using an in-house team, and you do not have access to such a service, please contact the Co-ordination Centre for further advice.
- A multi-language leaflet template is available on the NHS Surveys website, and this can be included with your first and third mailings. Trusts and approved contractors can use this leaflet by inserting their appropriate helpline number. This gives directions in the 20 most common non-English languages spoken in England and also in easy read (routed to a separate number run by Mencap to help those with learning disabilities).
- Many households include at least one **competent English speaker** who can help the patient to fill in a questionnaire. In practice, this is often the most efficient way of gathering data from non-English-speakers, although it is not ideal, as there is no control over the way in which a patient's family or friends translate questions or interpret their responses, and it does not allow the patient to answer the questions directly.

9 Timetable

The survey fieldwork period for 2012 is 18 weeks. We recommend making full use of this to maximise response from younger and black and minority ethnic (BME) groups as previous research shows that these groups take longer to respond¹. The best way to optimise the length of available fieldwork is to ensure that you generate your sample promptly (i.e. within the recommended four week sample checking period – see key dates below) and mail out your questionnaire packs promptly once permission has been received. Dissemination of the results to all staff, and to the local community and media, can only start after the survey has been completed so this will take additional time to complete.

If you commission an approved contractor, much of the work will be done by them, but you will still have to be involved in some of the stages of the process, marked in **bold** in Table 2 below. If you are using an approved contractor for the survey, they will provide you with a timetable that might differ slightly to the suggested time periods below. As long as the specified three mailings take place and data is submitted to the Co-ordination Centre no later than the **11th January 2013**, the timetable provided by the contractor should take precedence over the suggested intervals below.

Table 2 – Inpatient Survey timetable

Week	Task	See Section
0	Inform Co-ordination Centre of Trust contacts and who is carrying out your survey by 31st August 2012 (in-house or using an approved contractor)	4 & 5
1	Decide on questions to be included in the survey (i.e. select from question bank or use the core questionnaire)	14
1	Draw sample of patients to be included in the survey	10
1	Check sample for deceased patients using hospital records	10.2
1	Submit sample list to DBS to check for deceased patients and remove deceased patients from your sample list	10.3 & 10.4
1 - 4	Submit anonymised sample to Co-ordination Centre before starting mailing process	11
1	If using an approved contractor, supply them with trust headed paper and a signature of a senior executive and, if appropriate, ensure that the service contract is signed	5.2 & 15.2
1	Print questionnaires and covering letters	15.1 & 15.2
2	Set up FREEPOST address, PO Box and helpline	16.1, 16.2 & 16.3
2	Establish system for responding to telephone enquiries	16.3
2	Establish system for booking in questionnaires	16.6
3	Send first weekly response rate and helpline monitoring form to Co-ordination Centre	12
3	Check your own trust's records again for any patient deaths	10.2

Continued...

¹ For details of this research carried out by the Picker Institute Europe see:
http://www.nhssurveys.org/Filestore/documents/Extension_of_fieldwork_for_inpatient_survey_2007.pdf

Table 2 continued...

Week	Task	See Section
3-8	Stick labels on pre-packed numbered questionnaires and reminders supplied by approved contractor (if NOT using a service contract)	16.5
3-6	Send out first questionnaires	16.5
3-14	Continue to respond to telephone enquiries	16.3
3-14	Log and process returned questionnaires	16.6
3-14	Enter data	17
6-9	Check your own trust's records again for any patient deaths	10.2
6-9	Send out first reminders to non-responders	16.7
7-10	Be prepared for a small peak in telephone calls as first reminders received	16.3
9-12	Check your own trust's records for any patient deaths	10.2
9-12	Send out second reminders to non-responders	16.7
12	Send hard copy of questionnaire to Co-ordination Centre (by 30 th November at the latest)	3.1
18	Complete data entry	17
18	Send data to Co-ordination Centre (by 11 th January 2013 at the latest)	17

Key dates

Inform Co-ordination Centre who is carrying out survey	ASAP and no later than 31 st Aug 2012
Submission of sample data	10 th Sep - 5 th Oct 2012
Approval of sample data	From 18 th Sep 2012
Weekly monitoring starts	27 th Sep 2012
Close of fieldwork	11 th Jan 2013

Mailing reminders

Please note that your second and final reminder must be mailed no later than Friday 14th December.

10 Compiling a list of patients

This section explains how to draw a sample of patients. This task will need to be carried out by a member of staff at the NHS Trust. In hospital trusts, the sample will normally be drawn from the Patient Administration System (PAS). Prior to sending out questionnaires, a number of important checks must be carried out on the sample, including a check by the Demographics Batch Service (DBS) to identify deceased patients.

Please follow the instructions below carefully and allocate sufficient work time to check the sample for deceased patients with DBS before the first mailing and within the trust prior to each mailing.

Before compiling your patient list

We strongly advise that you read all of this section BEFORE you start to compile your patient list.

10.1 Compile a list of eligible patients

- 1) Select the month of inpatient discharges in which your survey sample will end. You should start counting back from the last day of **either** June 2012 **or** July 2012 **or** August 2012. For optimal consistency, sample the same month as was used for the 2011 inpatient survey. If you have good reason to believe that this month was irregular in a way that would generate an unusual sample, your next choice should be the most recent month you can manage. If you change month of sampling, please inform the Co-ordination Centre for our records.
- 2) Compile a list of 900¹ adult (**aged 16 and over**) inpatients consecutively discharged alive from your trust working back from the last day of the sampling month. That is, once you have decided on the latest date of patient discharge you will include in the sample (i.e. 30th June 2012 **or** 31st July 2012 **or** 31st August 2012), you should count back through the list of patients discharged live from the trust, including all eligible patients, until you have 900 patients.

Note

Some trusts have a much lower discharge rate than others. If necessary, a trust can include all patients discharged back as far as the 1st January 2012 to generate their sample of 900 adult inpatients submitted to DBS.

The information you obtain about each patient will be used both for administering the survey and for sending to the tracing service to check for deceased patients. It saves time and effort if all the information is gathered at the same time.

The list should **include**:

- **ALL** eligible adult patients, who have had at least **one overnight stay** (see Glossary) within the trust.

¹ The final sample size must be no greater than 850, but starting with 900 allows for a safety margin of a few extra patients, once any deceased patients have been taken out of the sample.

The list should **exclude**:

- deceased patients
- children or young persons aged under 16 years at the time of sampling¹
- obstetrics/maternity service users, including spontaneous miscarriages (see Glossary)
- patients admitted for planned termination of pregnancy
- psychiatry patients (see Glossary)
- day cases
- private patients (non-NHS)
- any patients who are known to be current inpatients²
- patients without a UK postal address³ (but do not exclude if addresses are incomplete but useable, e.g. no postcode).
- Any patient known to have requested their details are not used for any purpose other than their clinical care (if this is collected by your trust you should ensure that you remove those patients from your sample list at this stage).

Treatment Centres

Patients who stayed as an inpatient at an NHS treatment centre at the trust are eligible for inclusion in the sample for the 2012 inpatient survey, provided they meet the criteria above. These patients should be flagged up by inserting a '1' in the appropriate column in the sample file (see the example sample file in Table 3, p.33).

10.2 Checks carried out by the trust

Once you have compiled your list of 900 patients, you should carry out the following checks *before* you send the list to the DBS (who will carry out a further check for deceased patients):

- **Deceased patients.** Check hospital records do not have a record of a patient's death from a subsequent admission or visit to hospital.
- **Overnight stay.** Check that patients had at least one overnight stay in hospital. Patients are considered to have had an overnight stay if they were admitted as an inpatient and occupying a bed at midnight, e.g. patients who are admitted as an inpatient on Day 1 and discharged on Day 2 are considered to have had a single overnight stay regardless of their admission time or discharge time. Day cases and outpatients are **not** included in this survey.
- **Current inpatients.** Check that none of the patients are known to be current inpatients in your trust (or elsewhere, if possible).
- **Patient ages.** Check that all patients are aged 16 or over at the time of sampling (ie when the patient list is drawn in September/October the patient must be aged 16 or over).

¹ Please do not exclude patients treated at children's hospitals as such sites do treat patients who are sixteen years and over and therefore eligible for inclusion in the survey.

² Current inpatients: Trusts are instructed to exclude current inpatients from the sample when generated. This should be the only time current inpatients are excluded from the survey process. When checks for deceased patients are carried out immediately prior to each mailing, do not check for, or exclude, current inpatients at these times. This improves the comparability of samples between trusts and thus reduces bias.

³ Patients whose address is in the British Islands (Isle of Man, the Channel Islands) are eligible for inclusion in the survey.

- **Postal addresses.** Exclude any addresses that are outside the UK.
- **Incomplete information.** Check for any records with incomplete information on key fields (such as surname and address) and remove those patients. However, do not exclude anyone simply because you do not have a postcode for them. Only remove a patient if there is insufficient name or address information for the questionnaire to have a reasonable chance of being delivered. The more cases that are removed at this stage, the poorer the sample coverage and the greater the danger of bias.
- **Duplications.** Check that the same patient has not been included more than once.
- **Obstetrics/maternity service user.** Check that the list does not include maternity service users. Please ensure that no episode of a patient's care has a maternity specialty code and that there are no route of admission codes indicating a maternity admission (see glossary for list of codes relating to maternity patients).
- Check again that none of the patients were admitted for a **termination of pregnancy**.
- **Psychiatry patients.** Check main specialty codes and ensure that the list does not include psychiatry patients (see glossary for list of codes relating to psychiatry patients).
- **Private patients.** Remove any private patients from the sample.
- **Patients treated at private hospitals.** Remove any patients who were treated by the trust as NHS patients in private hospitals.
- **Dissent.** Any patient known to have requested their details are not used for any purpose other than their clinical care (if this is collected by your trust you should ensure that you remove those patients from your sample list at this stage).

Checks for deceased patients

One of the most reliable and up-to-date sources of information on patient deaths is your own trust's records. **It is essential that you check that your trust has no record of a patient selected for the survey having died at your trust.** Relatives are likely to be particularly upset if they receive a questionnaire or reminder from the trust where their relative died. Clearly, patients may also have died at home or while under the care of another trust, so you still need to check with the tracing service (DBS) as well.

The methodology for this survey requires three stages of checks for deceased patients before the first mailing is sent out. The checks are carried out sequentially by:

- 1) the trust
- 2) DBS
- 3) again by the trust (for patients who may have died in hospital after submission of the sample to DBS).

You are also advised to check your hospital records for any further deaths prior to posting the second and third mailings, and to ensure that approved contractors are advised immediately if any patients in the sample die during the survey period.

10.3 Submitting your patient list to the Demographics Batch Service (DBS)

Before sending out the questionnaires, the list of patients should be checked for any deaths by the Demographics Batch Service (DBS).

The DBS enables users to submit and receive a file containing relevant patient records electronically using dedicated client software. The patient records in the file are matched against the NHS Spine Personal Demographics Service (PDS).¹

Create a trace request file

Using your list of patients, you need to create a correctly-formatted batch trace request file to send to DBS. You should take advice from your local Trust PAS team on the correct format to submit files. Technical details on the file format are available from:

<http://www.connectingforhealth.nhs.uk/industry/docs/files/dbs/index.html>

For each patient you will need to include as a minimum:

- NHS number and full date of birth (yyyymmdd) – this is the recommended approach *OR*
- Surname, first name, gender, date of birth and postcode (can be wildcarded e.g. LS1*)

Although residential postcode is not mandatory it is highly recommended to include it to avoid incorrect matches. Due to the way addresses are recorded throughout the NHS, it is very difficult to get an exact match on address lines. For this reason, **do not** include address lines in the trace request file.

Submitting the trace request file

Please note that the DBS does **not** accept the transfer of files by encrypted emails or on physical media. Instead, **request and response files must be transferred electronically using the dedicated DBS client software**. The DBS client software should have already been installed on a server within your trust. Please speak to a member of your IT department or PAS team if you do not know how to access and use the application. If your IT department cannot help, contact the DBS implementation team at: demographics@nhs.net and they should be able to advise you.

If you have been set up to use DBS, then once you have created the request file, it should be placed in the client in-box. The DBS client will then send the file to the Spine and, if you are registered, you will receive an email to say that the file was received. The DBS processes the file overnight and it should be ready the following morning. You will be notified by email when the file has been processed. During periods of high demand for DBS service, it may take 48 hours for your file to be returned.

The response file

The DBS will return a header row, response body and trailer row. The response row will be in two parts:

- The response containing all the data supplied in the request record, together with a trace outcome indicator. The main record is returned in all cases.
- An additional response column, which is returned only when there is a single unique match. It is on this additional response column that patients found to be deceased will be indicated.

¹ The PDS is a national electronic database of NHS patient demographic details. The PDS does not hold any clinical or sensitive data such as ethnicity or religion.

For further information see:

<http://www.connectingforhealth.nhs.uk/industry/docs/files/dbs/index.html> and

www.cfh.nhs.uk/demographics/dbs

Note

Please be aware that tracing services are not foolproof and even after your patient list has been checked for deaths, some patients may die in the period between running the check and the questionnaire being delivered. You may find that some recently deceased patients remain in your sample. You need to be prepared for this. Special sensitivity is required when dealing with telephone calls from bereaved relatives.

10.4 Identifying deceased patients when the patient file is returned from DBS

The trace response file returned from DBS can be used to identify any patients who have died (indicated by a letter 'D') and therefore need to be deleted from the sample file. This will reduce the numbers in your sample list slightly. **Please note that you should not exclude patients just because it was not possible for DBS to match them on their records. If you did this, you would bias the sample.**

What to do if you have more than 850 patients remaining on your list

When your patient list is returned by DBS, and you have removed all deceased patients, there should still be more than 850 patients in the list. You will need to remove the **least recent** patients from your sample so that only the 850 most recent patients remain.

What to do if you have fewer than 850 patients remaining on your list

If your patient list has fewer than 850 patients after deceased patients have been removed, you **MUST** contact the Co-ordination Centre on 01865 208127 or email Acute.data@pickereurope.ac.uk. If possible, the next most recently discharged patients after the sample will need to be added to create a sample of 850 patients, although these must also be checked by DBS.

Important note

You are aiming for a **response rate of at least 60%**, which means that you should have about 500 completed questionnaires if you send questionnaires to 850 patients. You will be able to maximise your response rate by following this guidance carefully, drawing your sample and mailing out as soon as possible, and you will need to send out two reminders. It is **not** acceptable to try to boost the number of responses you receive by including more patients when compiling the sample of 850 for the survey as this would bias the survey. The Co-ordination Centre will only be able to accept responses from the patients in your list of 850 that have been correctly sampled and mailed. (See Section 10.11 for the accepted options for increasing your sample size)

10.5 Create the sample file

Information relating to your sample of patients should be entered into an Excel file which should resemble Table 3 below. A pre-designed spreadsheet including the all the required column headings can be downloaded from the NHS Surveys website (<http://www.nhssurveys.org/surveys/647>) and is entitled 'Sample construction spreadsheet'. The column headings in this document are identical to those supplied in the validated spreadsheet produced by the Co-ordination Centre for final submission of data (the 'Data entry spreadsheet') and so it will be advantageous for you to use the sample construction spreadsheet at this stage, rather than to create your own spreadsheet. Enter the required information and save this file as <NHStrustname>_Inpatients2012.

This file has three purposes:

- 1) It will be used to keep a record of which patients have not returned questionnaires so that reminders can be sent to them.
- 2) It will be used to generate weekly response rates for your trust that must be forwarded to the Co-ordination Centre every Thursday from **27th September 2012** until the closing date of the survey.
- 3) The anonymous data in this file (i.e. all the data **except** patient name and address information) will form part of the file that you will submit to the Co-ordination Centre when the survey is completed.

More details about the information required in this file are provided below.

Table 3 – Sample construction spreadsheet of patient details

<i>Black</i> Patient record number	<i>Black</i> Title	<i>Black</i> Initials	<i>Black</i> Surname	<i>Black</i> Address1	<i>Black</i> Address5	<i>Black</i> Postcode	<i>Red italic</i> Year of birth	<i>Red italic</i> Gender	<i>Red italic</i> Ethnic category	<i>Red italic</i> Day of admission	<i>Red italic</i> Month of Admission	<i>Red italic</i> Year of Admission	<i>Red italic</i> Day of discharge	<i>Red italic</i> Month of discharge	<i>Red italic</i> Year of discharge	<i>Red italic</i> Length of Stay	<i>Red italic</i> Main Speciality on discharge	<i>Red italic</i> Referring PCT	<i>Red italic</i> GPMC	<i>Red italic</i> Treatment centre admission	<i>Red italic</i> Route of admission	<i>Red italic</i> NHS Site code on admission	<i>Red italic</i> NHS Site code on discharge	<i>Green italic</i> Day of questionnaire being received	<i>Green italic</i> Month of questionnaire being received	<i>Green italic</i> Year of questionnaire being received	<i>Green italic</i> Outcome	<i>Black</i> Comments
IP12RX10001	Mrs	A	Abbot			AB1 1YZ	1934	2	A	5	8	2012	11	8	2012	6	100	5LS	A12345	0		RR115	RR115				3	Informed that patient had died
IP12RQA0002	Mr	EC	Ahmed			AB2 6XZ	1970	1	J	20	7	2012	12	8	2012	23	101	5LT	B12345	1	11	RTE03	RTE03	22	10	2012	1	
IP12RZZ0849	Ms	K	Yoo			AB4 7MX	1950	2	R	17	6	2012	31	8	2012	75	300	5LS	F56789	0		RR115	RR115					
IP12RLF0850	Ms	F	Young			AB9 5ZX	1946	2	A	14	8	2012	31	8	2012	17	100	5GT	G56789	0	22	RR120	RR117	6	11	2012	1	

Important note about Table 3

The headings are in three different colours:

Black headings: these columns contain information on patients' names, addresses and comments that may allow them to be identified. This information must not appear in any files sent to the Co-ordination Centre. This information, along with a copy of the patient record number should be removed from the sample file as soon as your sample is finalised and saved to a new file (your "mailing data" file - see Section 10.9).

Red italic headings: these columns should be completed during the sampling phase and submitted to the Co-ordination Centre prior to mailing (to allow for final inspection by the Co-ordination Centre - see Section 11) and at the conclusion of the survey (see Section 17.5).

Green italic headings: these columns should be completed when the patient responds to the survey (e.g. by returning a completed questionnaire), or when the trust is notified the patient will not be participating (patient deceased, moved address, too ill, or called to opt out).

The information that must be entered into this spreadsheet will come from a number of different sources:

Information from hospital records

The following information can be compiled from hospital records:

- **Title** (Mr, Mrs, Ms, etc.)
- **Initials** (or First name)
- **Surname**
- **Address Fields**¹
- **Postcode**

Note

The **Patient Record Number, Title, Initials, Surname, Address** fields and **Postcode** are used for printing out address labels. You (or your contractor) can use the mail merge function in a word processing package for this purpose. (See Section 16.5)

- The **Year of Birth** should be included in the form of NNNN.
- **Gender** should be coded in numeric form: 1 = male and 2 = female.
- **Ethnic Category**² coding is the same as for last year's inpatient survey. The ethnicity of a person is specified by that person, and should be coded using the 17 item alphabetical coding specified by NHS Connecting for Health³. The codes are as follows:

White

- A British
- B Irish
- C Any other White background

Mixed

- D White and Black Caribbean
- E White and Black African
- F White and Asian
- G Any other mixed background

Asian or Asian British

- H Indian
- J Pakistani
- K Bangladeshi
- L Any other Asian background

¹ The address should be held as separate fields (e.g. street, area, town, and county), consistent with the address format required by the DBS.

² It is acknowledged that patient records might not always contain complete data on patients' ethnic category. However, this field should be included wherever possible. This data is required in order to evaluate non-response from different ethnic categories. This is in keeping with the aims of the Care Quality Commission and Department of Health to be more responsive to all ethnic groups and to ensure all groups are appropriately represented in their assessments.

³ These codes can be found in the NHS Data Dictionary provided by Connecting for Health on the following website:

http://www.datadictionary.nhs.uk/data_dictionary/attributes/e/enh/ethnic_category_code_de.asp?shownav=1

Black or Black British

M	Caribbean
N	African
P	Any other Black background

Other Ethnic Groups

R	Chinese
S	Any other ethnic group
Z	Not stated ¹

- **Day** of the month of admission (1 or 2 digits; e.g. 7 or 26)*
- **Month** of admission (1 or 2 digits; e.g. 3 or 10) *
- **Year** of admission (4 digits; e.g. 2012) *
- **Day** of the month of discharge (1 or 2 digits; e.g. 2 or 30) *
- **Month** of discharge (1 or 2 digits; e.g. 9 or 10) *
- **Year** of discharge (4 digits; e.g. 2012) *
- **Length of Stay** (Units = Days)²
- **Main Specialty on discharge** is recorded in the form NNN as outlined in the Updated National Specialty List which was implemented on the 1st April 2004. See http://www.datadictionary.nhs.uk/web_site_content/supporting_information/main_specialty_and_treatment_function_codes.asp?query=treatment_specialty&rank=1&shownav=1
- **Referring PCT** should be coded using the **first three** characters of the PCT character codes of the PCT which will be billed for the care of that patient. For the most up-to-date list of PCT codes, please see the Connecting For Health data set, "Primary Care Trusts", available at: <http://www.connectingforhealth.nhs.uk/systemsandservices/data/ods/datafiles>
- **General Medical Practice Code (GMPC)**: This is a new inclusion for the 2012 survey. Please record the six character organisation code of the GP practice at which the patient is registered. <http://www.connectingforhealth.nhs.uk/systemsandservices/data/ods/datafiles>
- **Treatment Centre Admission** should be coded as '1' for patients who spent any part of their inpatient stay at an NHS treatment centre within the trust, and coded as '0' if they did not
- **Route of Admission** coding is in line with 2011. When creating the sample file, please include the two-digit descriptive code as used within the NHS Commissioning Data Sets. A blank or full-stop should be used if this information cannot be obtained for a patient. See http://www.datadictionary.nhs.uk/data_dictionary/attributes/a/add/admission_method_de.asp?shownav=1

¹ The code "Z" should only be used if the patient was asked for their ethnic category but refused to provide it. If this code is missing for any other reason, ethnic category should be left blank in the sample information.

* Date fields must be supplied in separate columns (e.g. date, month, and year).

² Calculate this by subtracting the admission date (day/month/year) from the discharge date (day/month/year). For example, if discharge date = 15/7/2010 and admission date = 14/7/2010, the Length of Stay = 1. Do not use any other type of unit to calculate Length of Stay (i.e. do not use hours/minutes/seconds). All patients in the sample should have a Length of Stay greater than or equal to 1 day.

- **Hospital Site Code on Admission:** Please use this space to record the site of admission of the patient using the five character NHS Trust Site Codes (maintained by Connecting for Health). <http://www.connectingforhealth.nhs.uk/systemsandservices/data/ods/datafiles>
- **Hospital Site Code on Discharge:** Please use this space to record the site from which the patient was discharged using the five character NHS Trust Site Codes (maintained by Connecting for Health). <http://www.connectingforhealth.nhs.uk/systemsandservices/data/ods/datafiles>

Additional information

A number of additional pieces of information should also be entered into this spreadsheet:

- 1) **Patient record number (PRN).** This is a unique serial number which must be allocated to each patient by the trust (if the survey is being carried out in-house) or the contractor (if the survey is being carried out by an approved contractor). It should take the following format: IP12XXXNNNN where XXX is your trust's 3 digit trust code and NNNN is the 4 digit number relating to your sampled patients, e.g., 0001-0850. The PRN will be included on address labels and on questionnaires. Later, when questionnaires are returned (whether completed or not), you (or the approved contractor) will be able to use these numbers to monitor which patients have returned their questionnaires and to identify any non-responders, who will need to be sent reminders. If an approved contractor is used, you will need to agree with them on the range of serial numbers that will be used for your patients. Please note: this number should be available in, and correctly referenced for, every patient dataset for this survey (e.g. sample file, mailing file, final data).
- 2) **Day of questionnaire being received.** This can only be completed if and when a questionnaire is received by the trust or approved contractor. It should be filled in as a one or two digit numerical response which will range from 1-31, **not** a date format (e.g. N or NN **not** 12/09/11).
- 3) **Month of questionnaire being received.** This can only be completed if and when a questionnaire is received by the trusts or approved contractor. It should be a one or two digit numerical response, ranging between 1 and 12, **not** a date format.
- 4) **Year of questionnaire being received.** This can only be completed if and when a questionnaire is received by the trusts or approved contractor. It should be a four digit numerical response (e.g. 2012), **not** a date format.
- 5) The **Outcome** field will be used to record which questionnaires are returned to the freepost address, or are returned undelivered, or which patients opt out of the survey, etc.
 - 1 = Returned useable questionnaire
 - 2 = Returned undelivered by the mail service or patient moved house
 - 3 = Patient died
 - 4 = Patient reported too ill to complete questionnaire, opted out or returned blank questionnaire
 - 5 = Patient was not eligible to fill in questionnaire
 - 6 = questionnaire not returned (reason not known).

The outcome column is left blank at first if the questionnaire has not been returned (in Table 3 you can see that Ms Yoo has not yet returned her questionnaire).

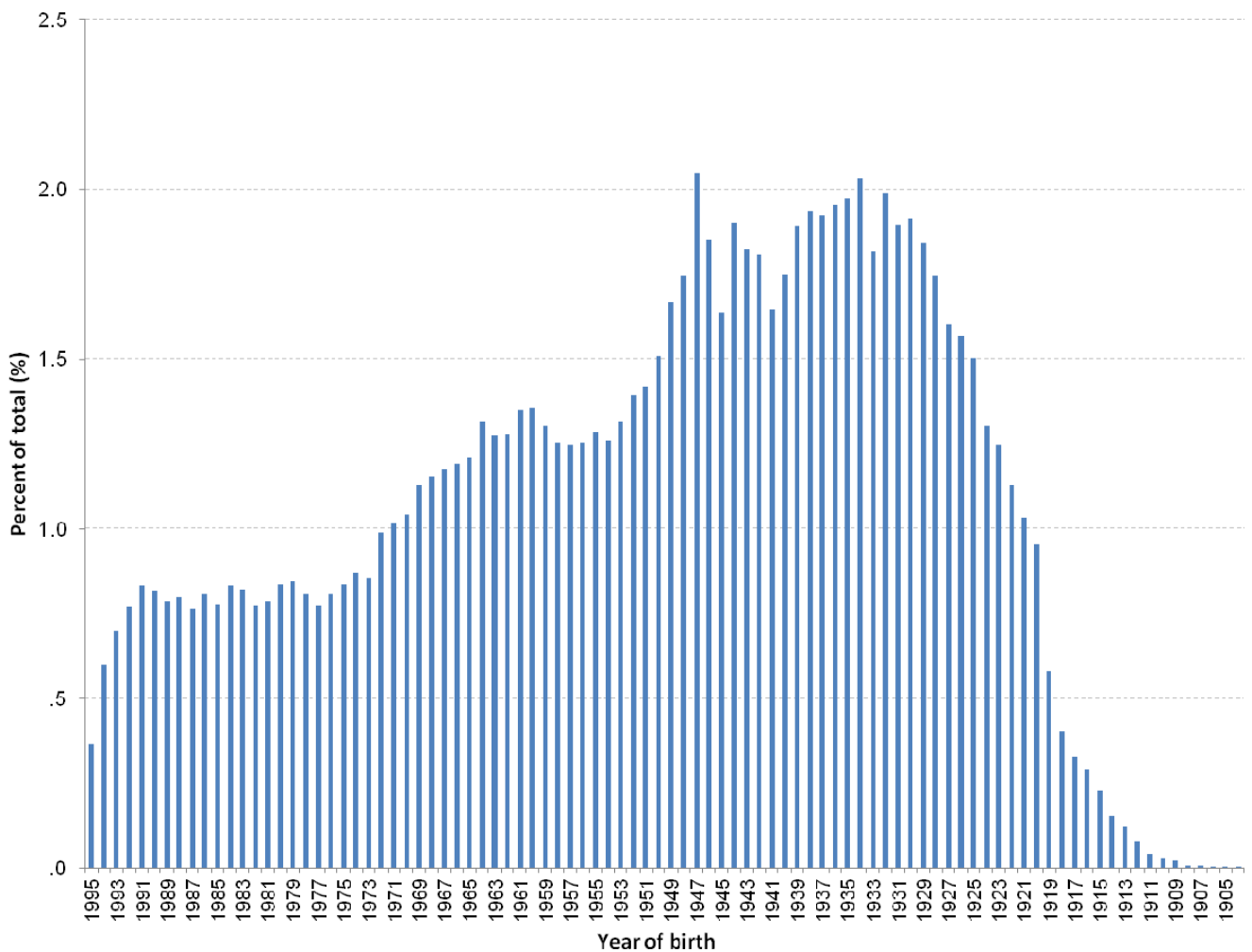
- 6) The **Comments** column is useful for recording any additional information that may be provided when someone calls the helpline – for example, to inform you that the respondent has died or is no longer living at this address.

10.6 Checking the distribution of patient ages in your sample

You should check that patients of all ages are included in your sample, paying particular attention to those aged 16, 17 or 18 years and those over 75 years. We have found these age groups are the most likely to be excluded due to poor sampling. It is possible there may not be any young adults or very old adults in your sample, but this should be confirmed by checking your original sample (before exclusion criteria were applied) and your sampling techniques.

A good way to check that your sampled patients' ages cover the full range of expected ages is to examine the distribution of ages on a histogram (See Figure 1). The histogram for your trust should resemble the shape of the histogram below.

Figure 1 – Example Age Histogram for Inpatient Survey 2011



10.7 Checking the distribution of patient gender in your sample

With the exception of hospitals specialising in one gender, your sample will probably have similar proportions of men and women. You should check that both men and women are included and that you can explain if the sample is skewed toward male or female patients.

10.8 Checking for other errors with your sample

Information on the errors made when samples were drawn for the 2011 inpatient survey can be found on the following webpage: <http://www.nhssurveys.org/surveys/593>. **Using this document to check for any errors may reduce delays caused by incorrect sampling and consequentially improve your response rate to this survey.**

10.9 Separating mailing details from sample information

At this point you should transfer the names, address and postcode for each patient in the sample to a new file – your ‘mailing file’. The patient record number (PRN) for each patient should be copied to the new file, so that the two datasets are connected using the unique PRN. It is essential to ensure this number is correctly applied to the two datasets. Save this new file as ‘Inpatients2012_mailing data’. It should resemble Table 4 below.

This file should be used for mailing purposes: it will be used to check for deceased service users prior to reminder mailings and will be cross-referenced with the sample file (<NHStrustname>_Inpatients2012) to identify service users who will need to be sent reminders.¹

As this mailing file will only be used occasionally during the survey, we recommend you keep this file encrypted. The mailing file should be destroyed when the survey is complete. This should be done by both the trust and the approved contractor, along with all other files created for the survey (aside from the survey response file).

Remember

For patient confidentiality reasons, **it is essential that you do not keep patient name and address details in the same file as their survey response data.**

¹ As shown in Table 3 (see section 10.5), the ‘outcome’ field in the sample file is used to record which questionnaires are returned completed, or are returned undelivered, or which patients opt out etc...

Table 4 – Example mailing file

<i>Patient record number</i>	Title	Initials	Surname	Address1	Address2	Address3	Address4	Address5	Postcode
IP12RX10001	Mrs	AM	Abbot	14 Station Road	London				AB1 1YZ
IP12RQA0002	Mr	EC	Ahmed	Flat 7	Short Street	Oxford			AB2 6XZ
IP12RZZ0849	Ms	K	Yoo	The Maltings	Birch Road	Little Abington	Cambridge	Cambs	AB4 7MX
IP12RLF0850	Ms	F	Young	634 Tyne Road	Newcastle-Upon-Tyne	Tyne and Wear			AB9 5ZX

10.10 Sharing the patient sample file with an approved contractor

If you are working with an approved contractor and have a contract in place relating to the transfer of patient identifiable information (i.e. names and addresses) allowing the contractor to carry out the mailing of the questionnaires for you, both the sample file (<NHStrustname>_Inpatients2012) **and** the mailing file (Inpatients2012_mailing data) should be sent to the contractor staff in encrypted format (see Section 6.6).

If you are working with an approved contractor, but have chosen to mail out the questionnaires yourself, in-house, you should supply them with just the sample file (<NHStrustname>_Inpatients2012). The contractor can use this file to record the outcome codes, but you should ensure that the contractor is kept up to date with any information that comes directly to the trust about patient deaths, etc.

10.11 Making more use of the survey locally

Up to this point, this section of the guidance has described in detail how sampling must be undertaken to provide the basic required sample of 850 patients for the NHS adult inpatient survey. In addition to this minimum requirement, though, your trust may wish to use the national inpatient survey as an opportunity to gather further data beyond that required by the Care Quality Commission. A good way to do this would be to increase your sample size.

Increasing the sample size for the survey may be helpful if, for example, you wish to:

- Analyse or compare results for specific subgroups (for example, patients treated at different sites or patients of different ethnicities) in more detail than would be possible from a sample of 850 patients. By increasing the sample size you can ensure that you have a large enough sample of patients from each group.¹
- Cover a very wide range of questions without exceeding the maximum questionnaire length of 16 pages for the main survey. If you wish to ask a large number of questions from the question bank, it would be possible to use two different versions of the questionnaire with a

¹ See section 18 for more information on the reliability of data based on different numbers of respondents.

different selection of questions included, each going to a separate sample (please note however that all patients in the core sample of 850 must receive an identical questionnaire which must include the core questions).

Alternatively, if your trust regularly treats very large numbers of patients, you may wish to draw an extra sample of patients to survey in addition to those included in the main survey. For example, you could select patients discharged in a different time period from those in the national survey and send them questionnaires either at the same time as or at some point after the national survey. By running the survey locally in addition to the national survey, you can establish a more frequent pattern of reporting enabling you to track experience over time, or test the impact of recent quality improvement initiatives. If you decide to carry out an inpatient survey locally at the same time as the national survey you will need to ensure that you are sampling two distinct and separate groups of patients which do not overlap. Guidance for carrying out a local survey is available at:

<http://www.nhssurveys.org/localsurveys>

If you are using an approved contractor for the national survey they will be able to advise you on the best way to increase your sample size to achieve your specific goals. If you are not using an approved contractor, then the Co-ordination Centre will be able to advise on any queries you might have via e-mail at advice@pickereurope.ac.uk or by calling 01865 208127.

Please note that the section 251 approval covers the national surveys only, and will not apply to any local surveys as the application has been made by CQC on behalf of all trusts, for a national standardised survey. Please contact your trusts Caldicott Guardian for advice as to whether it is appropriate to contact the National Information Governance Board for further approval.

Important points to consider

Before you decide whether to gather additional patient feedback (e.g. by increasing your sample size), there are some important points to consider:

- The core sample for the 2012 inpatient survey **must** be drawn as specified in this guide; any deviation from the guidance may make it impossible for the Care Quality Commission to use the data that you collect. It is therefore essential that any additional sample drawn can be easily distinguished from the core sample, and that it is drawn in such a way as to not interfere with selection of the core sample.
- If you are planning to undertake surveys more frequently than the national programme, then you should consider how any increased sample here will fit with the additional surveys you will be undertaking.

Remember

If you do choose to increase your sample size, it is essential that you ensure that the sample of patients you draw according to the requirements for the national survey can be easily distinguished from any additional patients you include in the sample. Your approved survey contractor or the Co-ordination Centre will be able to advise you on this.

You must **only** send the Co-ordination Centre data for the 850 patients sampled according to these guidelines, and these patients **must** be those discharged most recently. If you decide to carry out an inpatient survey locally at the same time as the national survey you will need to ensure that you are sampling two distinct and separate groups of patients which do not overlap.

10.12 Summary of key steps

By following the guidance in this section you should have completed all of the tasks set out below:

1. Compiled a list of eligible patients (Section 10.1)
2. Checked the list (Section 10.2)
3. Sent the list to the DBS to check for deceased patients and removed these patients from your list (Section 10.3 and 10.4)
4. Created a sample file (Section 10.5)
5. Checked the distribution of patient ages and patient genders in your sample file (Section 10.6 and 10.7)
6. Checked for other errors that may have occurred when drawing your sample (Section 10.8)
7. Removed personal data from the sample file and created a mailing file (Section 10.9)
8. If required, shared the sample file (and possibly the mailing file) with approved contractor (Section 10.10)

11 Final sampling inspection by the Co-ordination Centre

11.1 Procedure for submitting the anonymised sample file to the Co-ordination Centre

In order for the Co-ordination Centre to make final quality control checks, an anonymised sample file must be submitted to the Co-ordination Centre **prior** to the first mailing. This file will contain all columns *in red italics* in Table 3 – *Sample construction spreadsheet of patient details*, **but must not contain name, address and postcode details** (see Section 10.9).

Remember

Before submitting this data, each trust **must** first complete all checks described in the previous section (see sections 10.2-10.4 and 10.6-10.8). Further information on the errors made when samples were drawn for the 2011 Inpatient Survey can be found here:

<http://www.nhssurveys.org/surveys/593>

If you are using an **approved contractor**, you will send your sample file to your approved contractor and they will forward this data on to the Co-ordination Centre for the final checks. We strongly recommend the contractor carries out the same high standard of checks as in previous years before submitting the file to the Co-ordination Centre. The Co-ordination Centre will address any issues arising from these final checks to the approved contractor.

If you are carrying out the survey **in-house**, you will need to submit your data directly to the Co-ordination Centre.

11.2 Timetable for submitting data to the Co-ordination Centre

The Co-ordination Centre will be checking for extraordinary errors. These are more visible when viewing data from many trusts at one time. For this reason, samples will be checked as collated files. Table 5, below, sets out the dates of submission and the respective date contractors or trusts can expect to receive data back from the Co-ordination Centre. Initially, we will be working to the timetable included below but, if sufficient samples are submitted during a week, we hope to be able to respond to trusts and approved contractors earlier.

In cases where anomalies are discovered in the sample data submitted, trusts or contractors will be notified no later than midday on the Tuesday of the following week.

Table 5 – Sample submission dates

Date sample received	Date sample returned
10 th -14 th September 2012	18 th September 2012
17 th -21 st September 2012	25 th September 2012
24 th -28 th October 2012	2 th October 2012
1 st -5 th October 2012	9 th October 2012

Samples should be submitted to the Co-ordination Centre no later than **5th October 2012**. If they are not, there is a risk your trust will not have enough time to correct any problems in the sample and complete the survey with an acceptable response rate. Major errors may then result in the data from the trust being excluded from the relevant Care Quality Commission assessments.

Trusts which have not submitted their sample for checking by the **12th October 2012** will be contacted by the Co-ordination Centre to discuss any problems you are having and how we can help with the process. However, if samples are not received by the **19th October 2012**, then we are required to notify the Care Quality Commission of this and they will contact you to discuss any implications for inclusion in Care Quality Commission produced data.

Important note

Your first mailing should take place as soon as possible after your sample has been approved by the Co-ordination Centre and certainly **no later than seven days** after this. A large time lag increases the likelihood of patients having died between the sample file being received back from DBS and the questionnaire being received, increasing the risk of distress to family members and complaints to your trust.

11.3 Making the most of the fieldwork period

Because certain demographic groups (specifically younger patients and those from non-white ethnic categories) have been shown to take longer to respond to patient surveys, we strongly recommend that files are submitted within the four weeks specified for sample checking detailed above. The best way to ensure you are able to do this is to prepare before the start date of the survey (10th September 2012). There are several ways you can do this:

- 1) Allocate sufficient time to the individual who will generate your sample to allow them to generate it, dispatch it to DBS, and to respond to queries or corrections specified by your contractor or the Co-ordination Centre.
- 2) Discuss the work with your Caldicott Guardian to ensure they are available to sign off any necessary documents for the survey.
- 3) Ensure your trust is registered with DBS and that the person who submits your sample to them understands their requirements – problems with data submitted to tracing services is one of the most significant obstacles in mailing out your survey in good time. Also, do not assume you are registered – please check this ahead of time.
- 4) Printing of questionnaires and assembly of mailing packs can take place before the sample is signed off. Please ensure that the envelopes are left open though so that you can check the correct label is applied to the correct questionnaire. This means that you should decide on your questions as early as possible so arrange the times for any meetings that will discuss the questionnaires as early as possible.

12 Weekly Monitoring

The Co-ordination Centre requires weekly submissions of data on response rates and usage of the helpline (see Sections 12.1 and 12.2 respectively). The first submission of data must be made on Thursday **27th September 2012¹**, with further submissions being made every Thursday thereafter until the final date of submission. An Excel spreadsheet is available (<http://www.nhssurveys.org/surveys/647>) which **must** be used to return this information to the Co-ordination Centre. This information should be emailed to the Co-ordination Centre (acute.data@pickereurope.ac.uk) by the end of the workday every Thursday throughout the survey. However, weekly monitoring forms do not have to be returned over the Christmas holiday period (20th and 27th December 2012). Submissions should be resumed for the following week (3rd January 2013) for all trusts.

Note that weekly submissions only apply to the core² sample of patients

Important note

It is important that the structure of the Excel weekly monitoring spreadsheet is not altered and that the correct file name is used when submitting the data.

For trusts carrying out the survey in-house:

When the data is submitted, the file name **must** be in the following format:

IP12_<trust code>_<week of submission>.xls

e.g. IP12_RAC_1.xls (first submission of monitoring data on 27th September 2012)

IP12_RY2_3.xls (third submission of monitoring data on 11th October 2012)

For approved contractors:

When the data is submitted, the file name **must** be in the following format:

IP12_<contractor code>_<week of submission>.xls

e.g. IP12_ACP_1.xls (first submission of monitoring data on 27th September 2012)

IP12_ACY_3.xls (third submission of monitoring data on 11th October 2012)

Each approved survey contractor should use their unique 'contractor code'. Please contact the Co-ordination Centre if you are unsure of your code.

12.1 Monitoring response rates

The information submitted to the Co-ordination Centre should contain the following data:

- The total number of patients in your sample i.e. the total number of all those included in the first mailing,
- The number of patients in each outcome field (see (5) under the 'Additional information' subheading in Section 10.5).

¹ This submission must be made regardless of whether mailing has commenced.

² That is, the basic sample of 850 patients required for the national inpatient survey.

This will allow the Co-ordination Centre to monitor progress at a trust level and to identify trusts that may need assistance. It will also allow us to provide the Care Quality Commission with regular updates on response rate at a trust level.

12.2 Helpline monitoring

Each trust must submit the following information to the Co-ordination Centre:

- The overall total number of calls received by the helpline for this survey.
- A breakdown of this overall total number of calls, into:
 - The number of calls that led to completion of the questionnaire using the helpline (this should include completions via translation services)
 - The number of calls seeking assistance with language and translation (this should include completions via translation services)
 - The number of calls that led to completion of the questionnaire using translation services

Example: How to record calls

If a caller rang the helpline and completed the questionnaire over the phone using translation services, then this call should be recorded in all four 'categories' detailed above.

If a caller completed the questionnaire over the phone (and did not require translation services) this call should be recorded in the 'overall total' and the 'total number of calls that led to completion' (i.e. first and second categories detailed above).

If a caller rang the helpline to opt out of the survey or to ask a question (and did not require translation services), this call should just be recorded in the 'overall total' number of calls' (i.e. first category detailed above).

This information allows the Co-ordination Centre to identify areas of concern to patients and to improve future surveys.

13 Publicising the survey

13.1 Pre-survey communication with staff

As highlighted in Section 2, the best way to ensure your survey is a success is to work hard in the beginning to involve those people who have the most impact on patients' experiences and who will be responsible for responding to the results of the survey.

Setting up a project team

We suggest you put together a small team of people who are key stakeholders and involve them in decisions. Groups to consider include:

- Caldicott Guardian
- Board members
- Doctors, nurses and other health care staff
- Members of patient groups with a special interest in the trust
- Patients and carers
- Medical records personnel or Patient Administration System (PAS) staff
- Managers
- Staff or directors responsible for:
 - Clinical governance
 - Patient advice and liaison service (PALS)
 - Quality improvement
 - Strategic planning

Keeping everyone informed

Notify as many staff members as possible about the survey in case patients contact the trust asking questions about the questionnaire they have received. Patients can be expected to ask receptionists, doctors, nurses, patient liaison officers, or the Chief Executive's office about the survey, even when your covering letters give contact details for the survey manager(s) and the dedicated helpline. Notify front line staff and executive offices that a survey is being conducted, and give them the name and number of a contact person. Survey manager(s) should be prepared to respond to these calls quickly.

Staff could be notified of the survey through a variety of methods:

- Electronic (e.g. e-bulletins, website, intranet)
- Paper-based (e.g. staff briefings, newsletters, flyers, posters)
- Face-to-face (e.g. meetings, presentations and events)

Appendix 1 includes information which you can tailor for publicising the survey to staff.

13.2 Publicising the survey externally

To help promote involvement and maximise response rates, the survey can be publicised to patients and the public through a number of ways, for example:

- Send a press release to the local media to raise awareness of the survey and gain publicity just before the survey takes place. Information to help you draft a press release is shown in Appendix 2. Talk to your hospital's press office for more ways in which you can gain publicity locally.

- Put up posters around the hospital which show the importance the trust places on gathering patient feedback. To be most effective at increasing your response rate, posters should be put up in the hospital during the sampling period (i.e. during the month(s) from which your sample of inpatients will be drawn). A poster is available on the NHS surveys website at: <http://www.nhssurveys.org/surveys/647>

To encourage patients to respond, we recommend you illustrate how the trust has acted on the results of the previous inpatient surveys carried out by the trust. Patients are likely to be more motivated to take part in the survey if they can see tangible outcomes from a previous survey.

14 The core questions and question bank

Each trust must include in their survey the 78 core questions. A pre-designed core questionnaire is available on the NHS Surveys website, which includes only these questions, and can be used by trusts who wish to include just the core questions in the survey. Alternatively, trusts can choose to use an “enhanced” questionnaire, where additional questions of local relevance may be selected from a bank of validated questions and included in the survey in addition to the 78 core questions. A questionnaire compilation tool, called the ‘Question Bank Tool’, is available on the NHS Surveys website to help you create your questionnaire and select the additional questions of interest to you for use in your survey.

In summary, there are two options for carrying out the NHS adult inpatient survey:

- 1) Use the **core inpatient questionnaire**, which comprises 78 core questions.
- 2) Use an **enhanced questionnaire**, which includes the 78 core questions, plus additional questions of your choice added from the bank of validated questions.

Important note

In order to avoid questionnaire errors, we very strongly recommend that you do not retype or reformat the questionnaire in any way and use the Question Bank Tool on the NHS surveys website should you wish to generate an enhanced questionnaire.

14.1 The core questionnaire

The core questionnaire consists of 78 questions on 12 pages. These questions cover the issues that have been found to be most important to patients and **must** be included in your survey. The front page of the questionnaire explains the purpose of the survey and gives instructions on how to fill it in. In the pages that follow, the survey questions are divided into sections that broadly follow the patient's experience. The core questionnaire can be downloaded from the NHS Surveys website: <http://www.nhssurveys.org/surveys/647>

14.2 Using the Question Bank Tool to create an enhanced questionnaire

The core questionnaire includes all the compulsory questions you need to ask to comply with the NHS Patient Survey Programme. However, you might want to ask more questions on some topics which are of particular interest to your trust. You can do this by using the Question Bank Tool, which is available on the NHS Surveys website (<http://www.nhssurveys.org/surveys/647>). This tool allows you to select the additional questions you are interested in adding to your survey from a bank of validated questions. All of the questions included in the question bank have been designed and tested by the Co-ordination Centre for the Acute Survey Programme and are available online, with the questions arranged in the appropriate sections.

To access the tool, a username and password (chosen by individual users) need to be entered, to enable identification of each questionnaire you create, allowing it to be saved and retrieved.

Within the tool the core questions are clearly marked and must be included; additional questions can be selected for inclusion if your trust deems them to be particularly relevant at a local level. Please take care to maintain question order when adding from the question bank and check the

question skips are appropriate for your new questionnaire. Data from these additional questions should not be submitted to the Co-ordination Centre at the end of the survey.

For the question bank tool to work effectively, please use Microsoft Internet Explorer rather than other web browsers, such as Mozilla Firefox.

Deciding which additional questions to use

A PDF document called the 'Sample bank questionnaire' can be found on the NHS Surveys website (<http://www.nhssurveys.org/survey/647>) and contains all of the questions available in the inpatient survey question bank (highlighted in yellow). You may prefer to look at this document first to help you decide which questions to include in your survey. However, we recommend that you use the online Question Bank Tool to create your questionnaire, as this will format the survey and filter instructions as you select questions.

When deciding which additional questions to include, you may want to consider the following:

- **Comparison of results over time:** if you want to compare your results with the previous national adult inpatient survey, then remember to select the questions you used before.
- **Evaluation of service improvement initiatives:** if you are implementing service improvements, you may wish to include questions which measure the success of these initiatives.
- **Monitoring progress against national targets / trust-wide initiatives**

Another issue to consider when deciding about including additional questions is the printing of the questionnaire. It is advised that questionnaires are printed on A3 and folded into a booklet stapled in the middle, thus the number of pages in the questionnaire must be a multiple of four. (See Section 15.1 for more details.)

Do not exceed 16 pages in your questionnaire. This could result in a significantly reduced response rate for your survey findings.

Generating the questionnaire

Once you have selected all the questions you want to include in your survey, the questionnaire can be generated by clicking 'Generate PDF'. This produces a questionnaire in PDF format, which can then be saved on the website so you can return to it in future, save it to disk or print it out.

When you have finalised your questionnaire, remember to check the question numbering is consecutive and the 'Go to' instructions are correct.

Note

The Care Quality Commission holds the **copyright** to the inpatient Question Bank Tool. To protect this please:

- a) acknowledge in all published materials the Care Quality Commission's ownership of and copyright for the tool
- b) do not use the tool for generation of revenue

15 Materials

15.1 Printing questionnaires

Questionnaire layout

The questionnaire is rigorously tested in the format of the core questionnaire (available on the NHS Surveys website: <http://www.nhssurveys.org/survey/647>). All questionnaires used by trusts should emulate this format and should be comprised of the following:

- Two columns of questions on each page
- Questions should be presented with a consecutive question number, followed by the exact question wording used in the core questionnaire, and then each of the response options presented on a separate line beneath the question, for example:

Q26. Did doctors talk in front of you as if you weren't there?

- 1 Yes, often
- 2 Yes, sometimes
- 3 No

- Please do not arrange the response options horizontally across the page, rearrange the question options, or change the order of the questions in the questionnaire.

Number of pages

It is practical to ensure that the number of pages in a questionnaire is a multiple of four so that sheets can be printed double-sided on A3 paper and folded to make an A4 booklet, stapled in the middle. If pages are stapled at the corner, there is a greater chance that some pages will become detached and get lost. The core questionnaire, available in PDF format on the NHS Surveys website, is designed to fit onto 12 sides of A4 paper. Please note, your questionnaire should be a maximum of 16 pages. Questionnaires which exceed 16 pages are likely to result in a significantly reduced response rate.

Number of questionnaires

When calculating the number of questionnaires to be printed, you will need to allow for sending out duplicate questionnaires with second reminders. Printing costs can be unnecessarily high if a second print-run is required, so it is worth ensuring that the first print-run is sufficiently large to allow for contingencies. As a rule of thumb, multiply the number of patients in the sample by 1.7 to obtain the total number of questionnaires required. So, if the number of first mailing questionnaires you intend to send out is 850, then you might want to print 1.7 x 850, or approximately 1,500 copies.

15.2 Trust headed paper

You will need headed paper from your trust for covering letters for the first and third mailing. A reminder letter is used for the second mailing. Therefore, depending on your response to the initial mailings, you will need approximately 1,200 to 1,600 sheets of trust headed notepaper. If an approved contractor is being used to carry out the survey work, it is preferable that the paper does

not include a telephone number for the trust, as patients should call the contractor's FREEPHONE line, rather than the trust.

15.3 Mail out envelopes

It is important that the envelope(s) which you use to mail out your survey materials to patients does not show any indication of the NHS Trust name. Some patients may not have told family or friends that they have gone to hospital and, under data protection regulations, it is important that this information remains confidential to the patient. We would therefore recommend that the return address used on any mail out envelope(s) does not indicate trust name or address. It is, however, important that we record questionnaires which are returned undelivered as this affects response rate. We would therefore advise that, where necessary (i.e. for trusts conducting the survey in-house), a PO Box address is set up for envelopes which are returned undelivered.

Please note that the above does not apply to the address on the reply paid envelope (which can be a hospital address) as we assume that the patient is responsible for opening his or her own mail.

For further details on how to set up a PO Box please see Section 16.2.

15.4 Materials required for first mailing

You will need 850 of each of the following items:

- Printed questionnaires
- Large envelopes for mailing questionnaires to patient
- Labels for addressing envelopes
- Labels for sender address on reverse of envelopes (PO Box address recommended for in-house trusts)
- FREEPOST envelopes for return of questionnaires
- Covering letters using the trust's letterhead
- Multi-language helpline sheet (recommended)¹.

15.5 Materials required for second mailing (first reminder)

First reminders are sent to all patients who do not respond to the first mailing (except, of course, those who withdraw). Usually you will need to send first reminders to around 55-75% of the original patient sample. The following items are needed:

- Reminder letters
- Envelopes
- Labels for addressing envelopes
- Labels for sender address on reverse of envelopes (PO Box address recommended for in-house trusts)

¹ This document can be found on our website alongside the cover letters. The languages covered by this document are: Arabic, Bengali, Chinese (Cantonese), Farsi /Persian, Gujarati, Hindi, Kurdish, Chinese (Mandarin), Punjabi, Tamil, Thai, Turkish, Urdu, French, Italian, Polish, Portuguese, Russian, Somali, Spanish.

15.6 Materials required for third mailing (second reminder)

The second reminder should replicate the first mailing, and you will need to send this to around 45-65% of the original sample, depending on the number of responses to the previous two mailings. The following items are needed:

- Printed questionnaires
- Large envelopes for mailing questionnaires to patient
- Labels for addressing envelopes
- Labels for sender address on reverse of envelopes (PO Box address recommended for in-house trusts)
- FREEPOST envelopes for returning questionnaires
- Reminder letters
- Multi-language helpline sheet (if used in first mailing).

15.7 Other mailings and inclusion of other information in the mailing packs

Trusts should only use their sample information to mail out the three official survey mailings. The sample list should not be used for any other type of mailing, i.e. trusts should not mail their own letter to the sample list prior to the first mailing being dispatched.

Furthermore, no other material should be included in the questionnaire packs because of the unmeasurable impact upon response rates to the survey. Additionally, the Multi-region ethics board judged that inclusion of additional material that they had not viewed would invalidate the ethical approval they have given for the adult inpatient survey and the survey would therefore not be able to proceed.

16 Implementing the survey - practicalities

16.1 Setting up a FREEPOST address

A FREEPOST address allows patients to return completed questionnaires at no cost to themselves. After you have paid for the licence, you will only pay for the responses you receive. The FREEPOST address can be printed on the envelopes you send out with the questionnaires. Printed envelopes must comply with Royal Mail guidelines.

Details of how to apply for a FREEPOST licence can be found at the Royal Mail website: <http://www.royalmail.com/> Alternatively, you can call your local Sales Centre on 0845 7950 950.

16.2 Setting up a PO Box

This is recommended for in-house trusts to ensure that the mail out envelope(s) does not include any indication of the hospital address (please see Section 15.3 for more details about this issue).

Information on setting up a PO address can be found at: <http://www2.royalmail.com/delivery/inbound-mail/po-box>

16.3 FREEPHONE line

The covering letter to patients should include a telephone number for patients to call if they have any questions or complaints about the survey. All staff who are likely to take calls should be properly briefed about the details of the survey, and be aware of the questions or complaints they are likely to receive. If you run the survey in-house, you might want to set up a FREEPHONE line for this purpose. Alternatively, many approved contractors offer this service.

Managing calls to the FREEPHONE line

Where appropriate, ask the patients who call to tell you their patient record number, which should be on the address label of the envelope they received, and on the questionnaire itself. You can then use this number to identify people who do not want to receive any further reminders.

Below are some questions and comments commonly asked by patients and some advice on how they can be managed:

I have had two or more hospital admissions - which one should I refer to?

Patients should be advised to refer to their **most recent** hospital inpatient admission. Usually, this is the admission covered by your sampling period but, for the few patients who have been re-admitted since you drew the sample; it is simpler to tell them to refer to their most recent stay. It will not make the results invalid if a few of the patients refer to a more recent episode than the others.

I have a specific comment, complaint or question about my care or treatment. Who can I contact at the trust?

Patients can be referred to the trust's PALS, the complaints manager or patient services manager. Approved contractors should be given the contact details of the PALS office or an appropriate member of trust staff so that they can refer callers to that person.

The person to whom the questionnaire is addressed is unable to understand the questionnaire.

Relatives or carers may call to pass on this information. In some cases, they may offer to complete the questionnaire for the patient, but this is only advisable if there is a good chance that the responses are a true reflection of the patients' views.

The person to whom the questionnaire is addressed has died.

Even with the use of a deceased patients tracing service, it may not be possible to identify all deceased patients, particularly those who have died most recently. It is very important that staff who take the calls are aware of this possibility and are prepared to respond sensitively to such calls. These patients should be recorded as outcome = 3 (patient deceased) in the sample file (see (5) under 'Additional information' subheading of Section 10.5).

I would like to take part but English is not my first language.

If a patient's spoken English is better than their written English, they may be willing to have someone, such as a family member, fill in a form on their behalf. It is also strongly recommended that you offer access to a telephone interpretation service, where the questionnaire can be filled in over the telephone. A multi-language sheet in the twenty most commonly spoken languages in England is available on the NHS Surveys website, and trusts or contractors can make use of this by inserting the appropriate number for their helpline and/or translation service.

I do not wish to participate in this survey.

A few patients might call to say that they do not want to be involved in the survey, and fewer still may object to being sent the questionnaire in the first place. Staff should apologise to the patient and reiterate the statement in the covering letter - that taking part in the survey is voluntary, and that the patient's care will not be affected in any way if they do not respond. It might be helpful to point out the purpose of the survey, and to emphasise the potential value of the patient's responses. If the patient is willing to tell the staff member the identification number (patient record number) written on their survey, it might also be possible to prevent any further reminders being sent to that patient. It is also advisable to ask the patient to ignore any future reminders that they might receive. These patients should be recorded as outcome = 4 (opt out) in the sample file (see (5) under 'Additional information' subheading of Section 10.5).

Making a record of the calls

It is important to keep a record of the reasons patients called, as this can help to make improvements to future surveys and can provide useful additional information on patients' concerns. A standard form should be produced for completion by those taking the calls. The relevant details of each call can be recorded so that survey organisers can monitor any problems and remove patients who wish to be excluded from the mailing list.

We also ask for weekly submissions of helpline use from each trust to the Co-ordination Centre. This is discussed in detail in Section 12.2.

16.4 Covering letters

The standard covering letter is available in Microsoft Word format on the NHS Surveys website for you to download and add your own trust's details (see <http://www.nhssurveys.org/survey/647>). This letter has been given ethical approval for use in the NHS Adult Inpatient Survey 2012 and changes are not permissible. It should be printed on the trust's letterhead paper. A paper copy of

the letter you use must be sent to the Co-ordination Centre when you submit your data at the end of the survey.

Please note, for the first mailing letter and second reminder mailing there is now the option to include patient name. If patient name is used, please take great care that each letter is correctly matched to its corresponding questionnaire.

16.5 Sending out questionnaires

Address labels

Three address labels are needed for each patient. One set of labels will be used for the first mailing, one for the first reminder and one for the second reminder.

We recommend using the mail merge feature in a word processing package to create the address labels from the database of patient names and addresses. **It is essential that the patient record number is on each address label**, as this has to be matched with the number on the front of the questionnaire. The label should not include any other information except the patients' name, address and postcode details, and the patient record number.

Note on the patient record number (PRN)

The patient record number (PRN) is a unique number allocated to all patients at the start of the survey that allows their responses to be kept separate from their name and address, but allows matching up of the response data with the sample data (see Sections 10.5 and 10.9). It also allows patients to identify themselves if they contact the trust or contractor without needing to provide name and address information. The PRN should be centrally placed and large enough to be visible to all patients. The Royal National Institute of the Blind recommends the PRN be printed in size 14 font and located inside the box on the lower half of the front page of the questionnaire.

If patients delete this number from the cover page and then return the questionnaire, please enter their response information in an additional row at the bottom of the data file before submitting it to the Co-ordination Centre. Please do not attempt to match this data to a non-responder of similar demographics, but instead inform the Co-ordination Centre about this respondent and they will be treated as an additional patient to the sample.

Questionnaire packs

The envelope sent to each patient at the first mailing should include the following:

- 1) A questionnaire **numbered with the patient record number**. The number must match the number on the address label, and the number on the list of patient details.
- 2) A covering letter.
- 3) The multi-language helpline sheet (recommended).
- 4) A large envelope, labelled with the FREEPOST address on it.
- 5) These items should be packed into an envelope that has a return address on the outside (PO Box recommended for in-house Trusts). This should be the contact at the NHS trust, or the approved contractor.

Postage

The postage may exceed the standard letter rate. It is essential that the appropriate postage rate is paid.

Mailing the questionnaires

For trusts working with an approved contractor, there are two options for mailing out questionnaires, which depend on whether the work is being carried out under a service contract or not:

Contractors mailing questionnaires: If an approved contractor is carrying out the work under a service contract, they will send out questionnaires directly to the patient, and the return address label will be the approved contractor's address.

Trusts mailing questionnaires: If an approved contractor is carrying out most of the work, but not operating under a service contract, they should send pre-packed questionnaires to the trust for mailing out. The envelopes should be clearly marked with the patient record numbers so that trust staff can match these with their patient list and put on appropriate patient address labels.

16.6 Booking in questionnaires

When questionnaires are received, match up the patient record numbers against the list of patients, so that you can record (in the *outcome* column of your 'sample file') which patients have returned questionnaires and will not therefore need to be sent reminders. (See text box – Note on the patient record number (PRN) – above about what to do if a questionnaire is returned without the patient record number on the front). You will need to keep paper copies (or scanned pictures of all of the pages of the questionnaires, including the front page) of any questionnaires that are returned to you until **26th April 2013**, but please **do not** send these to the Co-ordination Centre.

Approved contractors

If an approved contractor carries out the work, questionnaires will be returned directly to them, so they will be able to record these returns against the list of patient record numbers. Trusts should inform the contractor of any questionnaires that were returned to the trust undelivered, and of any patients who inform the trust that they do not wish to be included in the survey, or if any patient dies during the period of the survey. The contractor can then record these details in their own patient list, and ensure that reminders are not sent out to those patients.

16.7 Sending out reminders

For results to be representative, it is essential to get a good response rate. To achieve this, you must send out two reminders to non-responders. **Remember, it is essential that you send out both reminders, even if you already have achieved a 60% response rate.**

Depending on the time that has elapsed since you first checked your patient list for deaths, it might be necessary to send your list back to the Demographic Batch Service for a further check before you send out reminders.

Approved contractors

If a trust is using an approved contractor but is carrying out the survey mailing in-house, the approved contractors should send the pre-packed envelopes bearing the patient record numbers of the non-responders to the acute trust. Again, the envelopes should be clearly marked with the patient record number so that those carrying out the mailing can correctly attach address labels by matching up patient record numbers.

First reminders

The first reminder should be sent to patients who have not responded after **one to two weeks**. We recommend approximately **ten** days between the mailing day of the first questionnaire and the mailing day of the first reminder. The first reminder should reach the participant while they are still in possession of the first questionnaire, and the optimal time for this will vary between trusts.

The standard first reminder is available in Microsoft Word format on the NHS Surveys website for you to download (see <http://www.nhssurveys.org/survey/647>). It can be printed on A5. It has been given ethical approval so no changes are permitted. A paper copy of the reminder letter you use must be sent to the Co-ordination Centre when you submit your data at the end of the survey.

Second reminders

Second reminders should be sent out approximately **two to three weeks** after the first reminder to patients who have not yet responded. Again the optimal time will vary between trusts and experience is the best guide for choosing mailing dates.

The envelopes should include the following:

- 1) A questionnaire numbered with the patient record number. The number must match (or correspond to) the number on the address label and the number on the list of patient details.
- 2) A covering letter.
- 3) A multi-language helpline sheet (if used in first mailing)
- 4) A large envelope, labelled with the FREEPOST address on it.

The standard second reminder letter is available in Microsoft Word format on the NHS Surveys website for you to download and add your trust's details (<http://www.nhssurveys.org/survey/647>). It has been given ethical approval so no changes are permitted. A paper copy of the second reminder letter you use must be sent to the Co-ordination Centre when you submit your data at the end of the survey.

Remember that you should check your trust's own records for deaths before sending out reminders.

While Trusts and contractors should choose the most suitable time to send out reminder mailings to achieve the optimal response rate, please do not leave more than 3 weeks between each mailing.

17 Entering data

Final data must be submitted to the Co-ordination Centre in the appropriate format by the deadline of **11th January 2013**.

If an approved contractor is used, they will be responsible for all of the data entry and checking, and will submit all data to the Co-ordination Centre in the correct format and supply the trust with an anonymised data set (see Section 6 on data protection issues).

17.1 Entering data from the core questionnaire

The data should be entered into the pre-designed Excel file, called the 'Data entry spreadsheet', which can be found on the NHS Surveys website (<http://www.nhssurveys.org/survey/647>).

You will see that, at the bottom of the Excel screen, there are labelled tabs for each of the worksheets within the workbook. The first of these tabs is labelled "Data". Click on this tab to show the data entry window. Data should be entered using the following guidelines:

- Each row records one patient response to the survey
- Patients who are missing their patient record numbers should be added to the bottom of the list, and not matched to patients with similar demographics
- For each question, the small number next to the box crossed by the patient should be entered as the response
- If a response is missing for any reason, it should be left blank, or coded as a full stop (.)¹
- If two boxes are crossed (where only one should be crossed), the response should be left blank or coded as a full stop(.)
- For most questions, each column corresponds to one survey question. However, there are some exceptions to this rule. For multiple response questions (e.g. Q74 and Q75 which instruct respondents to "Cross ALL boxes that apply", each response option is treated as a separate question (see example text box below)
- When saving this file to submit data to the Co-ordination Centre, please save only the first sheet (the 'Data' sheet) as a worksheet, rather than saving the whole file as a workbook; the Co-ordination Centre does not need the additional formula pages.

¹ If you want to use this data input file on the website to display frequencies on the other pages of the workbook, you will need to fill in the blank cells with a full stop (.)

Example: Entering data for multiple response questions

74. Do you have any of the following long-standing conditions? (Cross ALL boxes that apply)

- 1 Deafness or severe hearing impairment
- 2 Blindness or partially sighted
- 3 Long-standing physical condition
- 4 A learning disability
- 5 A mental health condition
- 6 A long-standing illness, such as cancer, HIV, diabetes, chronic heart disease, or epilepsy
- 7 No, I do not have a long-standing condition

Responses to each part of this question are coded: **1 if the box is crossed**
0 if the box is not crossed¹

Q74 takes up seven columns in the data file, labelled as follows:

Column headings	Q74_1	Q74_2	Q74_3	Q74_4	Q74_5	Q74_6	Q74_7
Codings for this example	1	0	0	0	1	0	0

17.2 Entering data from enhanced questionnaires

If you are using an enhanced questionnaire, with questions added from the question bank, you will need to set up your own Excel file for entering all the data. Your data file will have columns corresponding to each of the questions in your questionnaire.

Adapting the data file for sending required data to the Co-ordination Centre

You will need to send the data from **only** the 78 compulsory core inpatient survey questions to the Co-ordination Centre. To do this, you will need to transfer those columns of data that cover the responses to those 78 questions to the pre-designed Excel file (the 'Data entry spreadsheet') available on the website. The columns of this pre-designed Excel file are headed with the numbers corresponding to the question numbers in the core inpatient questionnaire. They also include the wordings of the 78 core inpatient questions so that you can match them up.² It is essential that you check carefully that the columns of data you select from any larger data set correspond to the 78 core inpatient survey questions.

¹ Please note: if a respondent does not answer any part of a multiple response question, (i.e. does not select any of the response options) then it should be left blank or coded as a full stop (.)

² The addition of bank questions to your questionnaire will mean that the numbering of the core questions contained in your enhanced questionnaire will not match up with the question numbering in the core questionnaire. Thus you will need to use the question wordings to match up the core questions in your enhanced questionnaire with the core questions contained in the core questionnaire.

17.3 Entering written comments ('free text') from patients

The Care Quality Commission has asked the Co-ordination Centre to request all written comments ('free text comments') provided by respondents to the 2012 inpatient survey. Any analysis of these free text comments will be conducted in a way that would not allow individuals to be identified.

Please ensure that the comments have been **anonymised**, (i.e. by replacing any names of staff, patients, wards or units with asterisks – see example below in Table 6) before sending to the Co-ordination Centre. (If you have already used a different method for anonymising the comments, this is acceptable, but please provide details of the procedure you have used.)

Preferably, the anonymised comments should be entered in the main data file alongside the responses to the 78 core questions and submitted to the Co-ordination Centre on or before the deadline of 11th January 2013. Please see Table 7 in Section 17.5

Alternatively, if you are unable to submit the free text comments by this deadline, then you may submit them in a separate file to the Co-ordination Centre by 8th February 2013. Please ensure you include the trust code, patient record number, gender, year of birth, ethnic group and outcome fields in this file. Include all patients in the sample, not just those who made comments. Also, ensure that patient record numbers are in line with the main data file of patient responses sent previously (i.e. the patient record numbers must relate to the same respondents in both the main data file of patient responses and the file containing patient comments). Your file will resemble Table 6 below.

Table 6 – Data fields to be included if sending separate data file of free text comments

Trust code	Patient Record Number	Gender	Year of Birth	Ethnic category	Outcome	Was there anything particularly good about your hospital care?	Was there anything that could be improved?	Any other comments?
RUB	IP12RUB0001	2	1956	A	1	The care was generally excellent, especially from Dr *****	I had to wait a long time for the results of my blood test.	
RXY	IP12RXY0002	1	1978	A	6			
RLM	IP12RLM0003	1	1942	G	1		Waiting room was dirty and more seating is needed.	
RJ9	IP12RJ90850	2	1981	Z	1	I was seen really quickly and got good care – thank you	no	Finding a place to park was really difficult

17.4 Coding data

For the 2012 national inpatient survey, trusts and contractors are required to submit raw ('uncleaned') data to the Co-ordination Centre. For clarification, raw data is created by the following:

- 1) All responses should be entered into the dataset, regardless of whether or not the respondent was meant to respond to the question (e.g. where patients answer questions that they have been directed to skip past, these responses should still be entered).
- 2) Where a respondent has selected more than one response category on a question, this question should be set to missing for that person in the data (i.e. left blank, or coded as a full stop (.)). The **exception** to this is for the 'multiple response' questions (e.g. Q74 and Q75), where respondents may select more than one response option (see Section 17.1 for details about how to enter responses to these types of questions).
- 3) Where a respondent has crossed out a response, this should not be entered in the data (the response should be left blank, or coded as a full stop (.)). Where a respondent has crossed out a response and instead selected a second response option, this second choice should be entered into the data.
- 4) Where a respondent has given their response inconsistently with the formatting of the questionnaire but where their intended response is nonetheless unambiguous on inspection of the completed questionnaire, then the respondent's intended response should be entered. For example, where a patient has written their date of birth in the boxes for Q73 (What was your year of birth), but written their year of birth in at the side of this, then the respondent's year of birth should be entered.
- 5) For the year of birth question (Q73), unrealistic responses should still be entered except following rule 4) above. For example, if a respondent enters '2012' in the year of birth box, this should still be entered unless the respondent has unambiguously indicated their actual year of birth to the side.
- 6) Once the data has been entered, no responses should be removed or changed in any way except where responses are known to have been entered incorrectly or where inspection of the questionnaire indicates that the patient's intended response has not been captured. This includes 'out-of-range' responses, which must not be automatically removed from the dataset. Responses in the dataset should only be changed before submission to the Co-ordination Centre where they are found to have been entered inconsistently with the respondent's intended response.

A data cleaning document will be provided during the fieldwork that will document all filtering and cleaning carried out on the collated dataset by the Co-ordination Centre so that trusts and approved contractors can duplicate this process after submitting the raw data to the Co-ordination Centre.

17.5 Submitting data to the Co-ordination Centre

The data from the core questions of the 2012 inpatient survey must be supplied to the Co-ordination Centre as one anonymised Excel file that includes information about the patient sample as well as data from respondents to the survey. The easiest way to do this is to use the pre-designed Excel file available on the NHS Surveys website (the 'Data entry spreadsheet', see <http://www.nhssurveys.org/survey/647>) as described in Section 17.1.

Please remember, in order to comply with the Data Protection Act, name and address details must not be sent to the Co-ordination Centre.

Required file format for final data

Please submit the file to the following specifications:

- Use Microsoft Excel Worksheet (not Workbook). Any version of Excel is acceptable
- The file name must be in the form <NHTrustName>_Inpatient2012.xls
- Use one row of data for each patient in the sample
- Use one column of data for each item of patient information or response
- Patients who are missing their patient record numbers should be added to the bottom of the list, and not matched to patients with similar demographics
- Missing data should be left blank or coded as a full stop (.).¹

Table 7 details the information that must be provided for each of the 850 patients in the original sample. Table 8, below, provides an example of the columns of data to be included in the file. Your file should have 850 rows (one for each patient included in your sample).

Table 7 – Data fields to be included in final data file submitted to Co-ordination Centre

Field	Format	Data codes	Comments
Patient record number	IP12XXXNNNN		The unique serial number allocated to each patient by the trust or approved contractor administering the survey.
Year of birth	NNNN		Format this simply as a number, not in date format.
Gender	N	1 = male 2 = female	If gender is not known or unspecified, this field should be left blank or coded as a full stop (.)

Continued...

¹ Data may be missing for a number of reasons. The patient may have skipped a question or a set of questions by following instructions; a patient may have not answered for some other reason. However, all missing data should be left blank or coded as a full stop (.), regardless of the reason for the omission.

Table 7 continued

Field	Format	Data codes	Comments
Ethnic category	N	National Codes: White A British B Irish C Any other White background Mixed D White and Black Caribbean E White and Black African F White and Asian G Any other mixed background Asian or Asian British H Indian J Pakistani K Bangladeshi L Any other Asian background Black or Black British M Caribbean N African P Any other Black background Other Ethnic Groups R Chinese S Any other ethnic group Z Not stated	Ethnic category should be included if the information is available.
Day of admission	N or NN		For example, if the patient was admitted on 14 th July 2012, this column should read '14'.
Month of admission	N or NN		For example, if the patient was admitted on 14 th July 2012, this column should read '7'.
Year of admission	NNNN		For example, if the patient was admitted on 14 th July 2012, this column should read '2012'.
Day of discharge	N or NN		For example, if the patient was discharged on 29 th July 2012, this column should read '29'.
Month of discharge	N or NN		For example, if the patient was discharged on 29 th July 2012, this column should read '7'.
Year of discharge	NNNN		For example, if the patient was discharged on 29 th July 2012, this column should read '2012'.

Continued...

Table 7 continued

Field	Format	Data codes	Comments
Length of Stay	N to NNNN		For example, if the admission date was 15/7/2012 and the discharge date was 16/7/2012, the Length of Stay = 1.
Main Specialty of Discharge	NNN	Use the codes as outlined in the Updated National Specialty List which was implemented on the 1 st April 2004	Only supply the 'Main specialty' for each patient on their DISCHARGE.
Referring PCT	NNN	Use the character codes provided by Connecting for Health to complete this field	Only use the FIRST three characters of the PCT code
GMPC	NNNNNN	Use the character codes provided by Connecting for Health to complete this field	Use the six characters of the GMPC
Treatment centre admission	N (0 or 1)	This flags whether the patient spent time in a NHS treatment centre at the trust	If the patient did spend any time as an inpatient in a treatment centre, this should be recorded as '1'; if they did not then it should be recorded as '0'.
Route of admission	NN	Please use the two-digit descriptive code as used within NHS Commissioning data sets	A blank or full-stop should be used if this information cannot be obtained for a patient.
NHS Site Code on admission	NNNNN	Use the character codes provided by Connecting for Health to complete this field	Use the five characters of the NHS site code
NHS Site Code on discharge	NNNNN	Use the character codes provided by Connecting for Health to complete this field	Use the five characters of the NHS site code
Day of receiving questionnaire	N or NN	This is the day you received a returned questionnaire from a respondent, or are notified that the patient will not be participating in the survey (patient deceased, moved address, too ill, or called to opt out)	For example, if the questionnaire was received on 15 th October 2012, this column should read '15'.
Month of receiving questionnaire	N or NN	This is the month you received a returned questionnaire from a respondent, or are notified that the patient will not be participating in the survey (patient deceased, moved address, too ill, or called to opt out)	For example, if the questionnaire was received on 15 th October 2012, this column should read '10'.

Continued...

Table 7 continued

Field	Format	Data codes	Comments
Year of receiving questionnaire	NNNN	This is the year you received a returned questionnaire from a respondent, or are notified that the patient will not be participating in the survey (patient deceased, moved address, too ill, or called to opt out)	For example, if the questionnaire was received on 15 th October 2012, this column should read '2012.
Outcome of sending questionnaire	N	1 = Returned useable questionnaire 2 = Returned undelivered by the mail service or patient moved house 3 = Patient died 4 = Patient reported too ill to complete questionnaire, opted out or returned blank questionnaire 5 = Patient was not eligible to fill in questionnaire 6 = Questionnaire not returned (reason not known)	Remember to fill in all the blank cells with the number 6 when the survey is complete.
Responses to each of the 78 core questions	N or NN or NNNN		Each column must be clearly headed with the core questionnaire question number. Data should be coded using the numbers next to the response boxes on the printed surveys.
Patients' free text comments: Was there anything particularly good about your visit to the A&E Department?	Text		Verbatim comments that could lead to identification of respondents must be removed, e.g. those mentioning patient, staff, ward, or unit names.
Patients' free text comments: Was there anything that could have been improved?	Text		Verbatim comments that could lead to identification of respondents must be removed, e.g. those mentioning patient, staff, ward, or unit names.
Patients' free text comments: Any other comments?	Text		Verbatim comments that could lead to identification of respondents must be removed, e.g. those mentioning patient, staff, ward, or unit names.

Note: To comply with the Data Protection Act, name and address details **must not** be sent to the Co-ordination Centre.

Table 8 – Example of data file to be submitted to Co-ordination Centre

Patient Sample Information

Patient Response Information

Patient record number	Year of birth	Gender	Ethnic category	Day of admission	Month of Admission	Year of Admission	Day of discharge	Month of discharge	Year of discharge	Length of Stay	Main Specialty on discharge	Referring PCT	GMPC	Treatment centre admission	Route of admission	NHS Site code on admission	NHS Site code on discharge	Day of questionnaire being received	Month of questionnaire being received	Year of questionnaire being received	Outcome	Q1	Q2	Q78	Was there anything particularly good about your hospital care?	Was there anything that could be improved?	Any other comments?	
IP12ABC0001	1934	2	A	5	8	2012	11	8	2012	6	100	5LS	A12 345	0	12	RR115	RR115				3								
IP12ABC0002	1970	1	J	20	7	2012	12	8	2012	23	101	5LT	B12 345	1	11	RTE03	RTE03	22	10	2012	1	1	1	-	1	I was seen straight away	No		
IP12ABC0003	1943	2	C	5	8	2012	11	8	2012	6	100	5LS	F56 789	0	21	RR115	RR115				3								
IP12ABC0004	1938	1	Z	20	7	2012	12	8	2012	23	101	5LT	G56 789	1	11	RTE03	RTE03	22	10	2012	1	2	1	-	1	The nurses were very helpful	Car parking		
IP12ABC0849	1950	2	R	17	6	2012	31	8	2012	75	300	5LS	J45 678	0	11	RR115	RR115				6								
IP12ABC0850	1946	2	A	14	8	2012	31	8	2012	17	100	5GT	K45 678	0	22	RR120	RR117	6	11	2012	1	2		-	2	The staff were great!		Food could be better	

You will notice that there are several blank cells in the response section of the file shown in Table 8 above. This is because the file includes a row for every patient in the sample, but you will only have responses from about 60% of the patients (that is, those who have returned a completed questionnaire, and who will therefore have an outcome code “1”).

Additional information required

The following information should also be included when submitting the final data file to the Co-ordination Centre:

- **Contact details** (telephone numbers and e-mail addresses) of at least two members of trust staff (usually the main and secondary contacts) who will be available to answer any queries about the data
- **One copy of the** covering letters and the reminder letters you used (a copy of your questionnaire should be sent to the Co-ordination Centre in November).
- A completed copy of the **checklist** (see Section 17.6 below).

Delivery

Data may be sent on encrypted CD-ROMs or by e-mail (see Section 6 for details on the recommended encryption and delivery methods to use). Hard copy documents should be posted to the address below:

Inpatient Survey 2012
Co-ordination Centre for Patient Survey Programme
Picker Institute Europe
Buxton Court
3 West Way
Oxford
OX2 0JB

E-mail: acute.data@pickereurope.ac.uk

Deadline for submission

The data must be supplied by **11th January 2013**.

17.6 Checklist

Before sending your data to the Co-ordination Centre, carry out the checks listed below in Table 9, and include this checklist when you submit paper copies of the covering letters (a printable version of the checklist can be found on the NHS Surveys website at: <http://www.nhssurveys.org/survey/647>).

It is essential that these checks are carried out thoroughly. The Co-ordination Centre is not obliged to make any corrections to data supplied by trusts or approved contractors.

If incorrect data are submitted, it is possible that the data will be considered unreliable and will not be used by the Care Quality Commission in your trust’s performance assessment and your trust’s scores will be set to a minimum value. We cannot accept re-submissions of data after the deadline, and likewise data is unlikely to then be included in the Care Quality Commission assessments.

Table 9 – Checks to be carried out on final data prior to submitting the data to the Co-ordination Centre

Check	Done?
1) Check that your file name follows the naming convention: <NHStrustName>_Inpatient2012.xls)	
2) Check that you have saved the 'Data' worksheet as an Excel worksheet , not a workbook. (The frequency and percentage counts on the other tabs of the workbook provided are intended for your use only)	
3) Check that you have included data columns for all 78 core questions	
4) Check that you have not included any columns of optional questions	
5) Check that all data are correct , and that all values are in range	
6) Send data only for the 850 patients consecutively discharged from your trust in the chosen month	
7) Check that all the data (excluding written comments) are in numeric format only, including dates, which should be entered as separate numeric fields for day, month and year	
8) Check that patients' written comments are in an anonymised format	
9) Check that you have completed the columns for the day, month and year you received the questionnaire back from patients	
10) To comply with data protection regulations, any patient name and address details must be removed before the file is sent to the Co-ordination Centre	
11) If you password protect your file, please notify the Co-ordination Centre of the password separately from the data file	
12) Include one paper copy of the covering letters you used for the first, second and third mailing	
13) Include telephone and e-mail contact details of two people who will be available to respond to any queries about the data	

18 Making sense of the data

The usefulness of your survey data will depend on how well you plan the survey process and on how effectively you analyse the data. Standard data analysis usually involves examination of the frequency of responses to each question and some cross-tabulation of responses against demographic and other information.

18.1 Using the 'Data Entry Spreadsheet' to analyse your results

Once you have entered the data from the core questions into the 'Data' worksheet of the Excel file provided (the 'Data entry spreadsheet'), the counts and percentages of responses to each of the 78 core questions are automatically computed and displayed on the other worksheets of the Excel workbook. These worksheets correspond to the sections of the inpatient core questionnaire (excluding the "Other Comments" section). For each question, the numbers and percentages of respondents who gave each answer is shown. The number of missing responses will also be shown, as long as you have coded missing responses on the data sheet as a full stop (.).

18.2 Suggestions for data analysis

The following suggestions may help you make the data analysis more useful and focused.

Use the data to help pinpoint problems

It is often tempting to focus on organisational strengths. This may be important for public relations and employee morale. However, if you emphasise only the positive, you may miss a critical opportunity to use the data to spur improvement.

One way to focus attention on where improvements are needed is to analyse responses in terms of the proportion of answers that suggest a problem with care. Try to maintain high standards in determining what constitutes a problem. For example, if questions allow respondents moderate response categories (such as "to some extent" or "sometimes"), in addition to more extreme ones ("always" or "never"), your analysis will be more powerful if you identify these moderate responses, as also indicating a problem.

"Drill down" into the data

It is impossible to analyse absolutely every issue a patient survey raises. One reasonable way to control the number of analytical questions is to conduct a staged analysis.

The **first** level of analysis should be the most general - for example, summary measures or measures of overall performance. The next level should delve into particular issues that underlie the summary measures - performance along particular dimensions of care, for example, or of particular units or staff. The final level should entail statistical or cross-tab analysis to attempt to get at the causes of the particular issues.

Group similar questions together to provide summary analysis

Analysing questions and presenting findings in a way that is comprehensive, logical and not overwhelming is a significant challenge. To make the data more compelling for others, and to speed up the analysis, we suggest:

- Linking questions that cover similar topics or processes
- Combining several questions into a single composite measure (by averaging responses, for example)

Use statistical tests to make comparisons and analyse subgroups

Statistical tests can be used to examine relationships and associations between groups (for example age, sex or ethnic categories). These tests take into account the number of responses, the variation in responses, and values of the items you are comparing (such as average responses). If tests show that the differences between two groups are not statistically significant¹, you should view the patterns of responses as only suggestive.

Calculate confidence intervals to give an indication of the uncertainty surrounding your results

Although there are many methods of describing uncertainty, confidence intervals² are used most often. By taking into account the number of responses, the variation in response, and the magnitude and direction of the estimate, the confidence interval describes the range of plausible values within which the "true" value for the population is likely to fall. Remember that the estimate itself is the most likely result, and this is therefore your best estimate, not the limits of the confidence interval.

Use patient feedback data with other data

Patient feedback data provides one valuable source of information about how patients experience and feel about the health services they receive. Linking feedback data with clinical data, outcomes data, and routinely collected data, when done appropriately, can provide useful insights.

Perform analysis by sub-groups

You may want to compare the answer to a survey question between two different groups to see if the differences are statistically significant (e.g. the answers for men versus women, or between patients treated under different specialties). However, comparing results *within* your trust considerably reduces the number of responses in each group. This will impact upon the level of confidence you have in the results and, therefore, your ability to accurately detect differences between these groups.

Table 10 (below) shows the level of confidence you would achieve for various numbers of respondents.

¹ **Statistical significance** is the degree to which a result is substantially different than would be expected by chance alone. For example, if the difference in data for a question from two survey years is statistically significant, this means that there has been a true change in the results that cannot be attributed solely to chance.

² A **confidence interval** is an upper and lower limit within which you have a stated level of confidence that the trust mean (average) lies somewhere in that range. The width of the confidence interval gives some indication of how cautious we should be; a very wide interval may indicate that more data should be collected before any conclusions are made.

Table 10 – Confidence intervals* for different numbers of respondents

Number of respondents	Widest Confidence Interval (+/-) ¹
50	13.9%
100	9.8%
200	6.9%
300	5.7%
400	4.9%
500	4.4%
600	4.0%

*at a 95% confidence level

If you are interested in looking at different sub-groups within your trust population (for example, patients treated at different sites in your trust), you will need to think about the number of respondents you need in each group, and how this will impact on the confidence you can have in the results. The Co-ordination Centre recommends a minimum of 100 respondents per group for comparison between sub-groups. Confidence intervals for analysis with groups of fewer than 100 respondents will be so large that there would be little certainty of detecting reliable statistical differences.

Example: How confident you can be in your results?

For a trust, 400 patients responded in total. Taking a particular question, of which 50% of respondents answered 'Yes', from Table 10 we can see that the widest confidence interval for 400 respondents would be +/- 4.9%. We would therefore be 95% confident that the true results would be between 45.1% and 54.9% - that is, if you had surveyed the entire population of inpatients at a trust.

However, if we are looking at the results for this particular question *by eight different groups of patients* (assuming an equal number of respondents in each region), there would only be 50 respondents in each group. If there are 50 respondents and 50% answered 'Yes', the confidence interval would be +/- 13.9%, so the true results could be between 36.1% and 63.9%.

If you are using a survey contractor to help you carry out your survey, they should be able to advise you on the minimum sample size for comparisons by particular sub-groups

¹ This column (the widest confidence interval) shows the **maximum** margin of error for binomial estimates of proportions

19 Reporting results

19.1 Prioritising your findings

Patient surveys can raise many compelling and important issues. To help you decide which issues to focus on first, you may like to consider the following suggestions:

Rank results by their magnitude

The most straightforward method of prioritising is to rank issues in order of the size of the problem and to focus first on those that are the greatest.

Compare your results against outside norms or benchmarks

A common method of prioritising is to select issues that compare unfavourably with national, regional, or local norms or with benchmark institutions. This allows you to focus on areas of comparative weakness. Compare your trust's results with the benchmarks on the Care Quality Commission website to find out where your trust performs better or worse than other trusts.

Compare results within your organisation

Comparisons within organisations can facilitate networking among units or departments and the sharing of information about effective practices. Internal 'competitiveness' may also fuel improvement efforts.

Compare results over time

Investigating trends in survey results over time is another powerful analytical tool for prioritising areas for improvement. Analysis of trends allows you to focus on correcting aspects of performance that are slipping, although you should confirm any apparent changes between years are statistically significant.

Comparison with predefined goals

Another way to identify priorities is to set threshold or target goals prior to the survey. You would then focus on issues where performance does not meet these goals. This method is particularly effective when there is clear consensus on what those goals should be.

Correlation with overall measures

Correlating patient responses to specific questions with their response to the question about their overall experience can help focus attention on issues that are important for patients.

Predictive value on overall measures (regression analysis)

Similar to correlation, regression analysis also gives a sense of the issues that most sharply affect patients' overall assessments of care. Regression analysis is superior to simple correlation, in that it can adjust for other things that have an impact on the overall measure, and it provides more precise estimates of how overall measures will change in response to improvement on individual items. Regression analysis is also more complex, but, in essence, it allows for a more level 'playing field'. There are limits to a univariate (crude) analysis and so regression analysis is an attractive option.

Ease of action

Many organisations focus initially on the issues that are easiest to improve. By demonstrating successful interventions, this prioritisation method can rally support for more difficult improvement efforts later on.

Areas of excellence

An organisation may also want to maintain excellence in areas where it is already perceived to be doing well. This approach can provide a clear and positive focus for clinical and administrative staff.

19.2 Writing the report

User-friendly reports that enable readers to understand and begin to take action on key issues are critical to the success of any survey project. The following suggestions will help you produce useful reports:

Tailor the document to the audience

- Use brief, succinct summaries for executive audiences.
- Use comprehensive summaries for those who will implement improvements. They will help achieve buy-in and generate action.
- A separate resource booklet or data disks/CD-ROMs with full details may be important if staff or researchers have questions.

Use graphics

- Data that are displayed visually can be easier to interpret.
- Display trends or comparisons in bar charts, pie charts, and line charts.
- Remember that colours don't photocopy or fax very well.

Keep the format succinct and consistent

- Graphics, bullets, tables, and other visuals help guide the reader.
- Choose a few of these elements and use them consistently.
- Too many types of visual elements can detract from the message.
- Be consistent in the use and appearance of headers, fonts, graphic styles and placement of information.

Emphasise priorities clearly

- Emphasise the highest priority items for action or commendation in executive summaries and major findings sections.
- Highlight the most important items - for example, use bold type.

20 Using results for quality improvement

Arguably the most important aspect of the survey process is making use of the results to bring about improvements. It is essential that this patient feedback is used to set priorities for quality improvement programmes and to create a more responsive, patient-centred service. It should then be possible to measure progress when the survey is repeated.

20.1 Prepare in advance

The most important way to ensure that the survey will result in improvement is to plan for improvement work before the survey is conducted.

- We recommend the survey lead/team take responsibility for developing a dissemination strategy to inform all of the relevant stakeholders about the survey findings.
- Publicise the survey before it happens. Engaging staff from the start will help to ensure their support later on with any improvement initiatives. Involving the local media and informing the public may encourage a good response rate from patients.

20.2 Dissemination of survey results

Engage key stakeholders

Raising awareness of the survey programme in your organisation is vital. Publication is an excellent way to inspire staff to take patient feedback seriously. By communicating your survey results to key stakeholders you will help to ensure they are used effectively and not forgotten. Consider the following groups:

- Staff throughout the trust as they will be responsible for tackling any problems identified by patients.
- Board members as they are involved in prioritising areas for improvement and shaping action plans. Their support is often crucial for the successful implementation of change.
- Patients have taken time to report their experiences so it is important they are informed of the results via local meetings, newsletters and articles in the local press.
- Patient groups with special interest in the trust who may have a key role to play in initiating discussions with the board about priorities for improvement and be keen to monitor progress as it occurs.
- When reporting the results it is a good idea to also invite people to contribute their ideas on how services could be improved and to suggest ways in which they can become involved if they wish to.

Spread the Word

Disseminating survey results entails far more than producing and photocopying a report. Consider how to share the survey results in training sessions, staff and public meetings, employee newsletters, executive communications, process improvement teams, patient care conferences, and other communication channels. You may wish to consider the following:

- Determine whether information should be shared initially with only senior-level people, or whether (and when) it should be spread further afield
- Make presentations to your trust board and to as many groups of staff as possible, each tailored appropriately for the audience

- Organise a high profile event to publicise the results and invite staff and patients to contribute to improvement plans
- Encourage staff at all levels in the organisation to contribute their ideas for improving patients' experience
- Publish the survey results on your website, including any intranet site and give readers the opportunity to feed back their ideas
- Email staff to tell them about the survey results and the action plan
- Share information with other NHS organisations in your area and other partner organisations including local authorities
- Give the results to community organisations and ask them for their views and suggestions
- Publicise results via local press, radio and community newsletters
- Publish results in your trust newsletter along with details of improvement plans

Promote understanding

To assist others in understanding the results, we recommend the following:

- Present results in user-friendly formats. Remember not everyone will be an expert in reading graphs and deciphering data
- Communicate information in a visual way, perhaps in the form of posters which can be displayed around your organisation.
- Focus on key messages arising from the results and emphasise both the positive and negative themes
- Illustrate themes with relevant patient comments or other forms of patient feedback to put the results in context

20.3 Identify key "change agents"

The people who can motivate others to bring about change and who hold the 'keys' to improvement in the organisation are not necessarily the most senior people. Identify these individuals and involve them as "change agents" early in the survey process.

20.4 Prioritising areas for improvement

Compare with other trusts

Compare your trust's results with the benchmarks on the Care Quality Commission website to find out where your trust performs better or worse than other trusts.

Compare departments within your trust

If your data allow it, further analysis of your results by sites or departments will provide a more detailed breakdown of performance. You may be able to identify examples of good practice within your trust which can be applied to other areas requiring improvement.

Identify where patients report most room for improvement

Issues can be ranked according to the size of the problem. Look at questions where more patients indicate that their care was not perfect and could be improved. Select the questions where most problems are reported and focus on the issues that are a priority for your organisation.

Focus on areas where work is already underway and solutions can be easily identified

Focusing on issues that present solutions (e.g. improving information provided to patients about medications they are given when they leave hospital) and choosing topics currently being considered by existing groups in your trust (e.g. the Clinical Governance Group) will help to gain the ownership and involvement of staff and patients and avoid duplication of effort.

Identify problems surrounding particular aspects of the patient experience

There may be particular aspects of care or elements of the patient experience where more problems are reported than others. For example:

- The time waiting to be admitted to a bed on a ward
- Being given enough information about their condition or treatment
- Receiving pain relief medication quickly
- Being discharged without a delay

20.5 Develop an action plan

Having used your survey results to identify areas for improvement, we recommend you work with staff and patients to identify and prioritise the actions required. Decide on achievable timescales and on the individuals who will be responsible for taking this work forward. This will form the basis of an action plan which can be updated on a regular basis.

Wherever possible, link the information from the patient survey results with other activities in the trust. You can also use other sources of patient feedback from:

- Patient Advice and Liaison Service (PALS)
- Complaints
- Service Improvement/Modernisation Teams

Initially it is a good idea to focus on one or two key areas for improvement and not to attempt to tackle all of the issues at once. Publishing regular progress reports widely throughout your trust and the local area will help to enlist ongoing support. Repeat surveys can then be used to monitor any improvements.

20.6 Use small follow-up surveys or focus groups to delve deeper

Your initial survey can help you identify areas in need of improvement, but you might need more detailed information to focus your improvement effort. It can be time-consuming and expensive to gather this information on a large scale. Small follow-up surveys focusing on selected groups of patients can provide valuable information and faster feedback.

20.7 Use already existing resources

The Department of Health has published the guide 'Understanding what matters: A guide to using patient feedback to transform care', which can be found on their website at: http://www.dh.gov.uk/en/Publicationsandstatistics/Publications/PublicationsPolicyAndGuidance/DH_099780. This guide may help you to get the most from your survey results.

21 Glossary

Adult inpatient

Any person having at least one overnight stay (see below) and aged 16 years or over.

Current inpatient

For the purposes of this survey, we define a current inpatient as a participant who meets the inclusion criteria for the survey, but is a current inpatient at any hospital in England. Please check your own trust records for any current inpatients during sampling and exclude these people from the sample during the sampling phase only. If you are aware that a patient is a current inpatient at another trust, also exclude these people. When checks for deceased patients are carried out prior to subsequent mailings, do not check for, or exclude, current inpatients.

Research Ethics Committee (REC)

The purpose of Research Ethics Committees in reviewing a proposed study is to protect the dignity, rights, safety, and well-being of all actual or potential research participants. A favourable ethical opinion from the committee implies that the research does protect the participant's aforementioned rights. A REC can grant a favourable ethical opinion for studies carried out in multiple regions of England. The inpatient survey is operated under approval from the North West REC. Prior to each survey a substantial amendment is applied for to cover any changes in questionnaire content or wording in the cover letters. The favourable ethical opinion for the study covers all NHS hospital trusts in England.

Overnight stay

Patients are considered to have had an overnight stay if they were admitted as an inpatient and occupying a bed at midnight, i.e. patients who are admitted as an inpatient on Day 1 and discharged on Day 2 are considered to have had a single overnight stay regardless of their admission time or discharge time.

Obstetrics/Maternity patients

Any patients with route of admission codes of 31 or 32 and/or coded with a main specialty of 501 (obstetrics) or 560 (midwife) admitted for management of pregnancy and childbirth, including miscarriages, should be excluded from the sample. A separate survey of maternity service users' experiences was conducted in 2010.

Psychiatry patients

Patients admitted as an inpatient to hospital for primarily psychiatry reasons should not be included in the sample. This will include all those with main specialties of:

- 700 learning disability
- 710 adult mental illness
- 711 child and adolescent psychiatry
- 712 forensic psychiatry
- 713 psychotherapy
- 715 old age psychiatry

Research Governance Framework

This outlines the principles of good research practice and is key to ensuring that health and social care research is conducted to high scientific and ethical standards.

Appendix 1: Suggested text for pre-survey communication with staff

Example titles:

What do our patients think about the [trust name]?

Getting patients' views on the quality of care in [trust name]

Understanding patients' experiences in [trust name]

Patient views vital to drive service improvements in [trust name]

We [or NHS Trust name / Hospital name] are carrying out a survey to find out what patients' think about the care they receive.

Why are we doing another patient survey?

A survey of adult inpatients was carried out as part of the national patient survey programme in 2011. We are carrying out another survey, using the [same / a similar] questionnaire and methodology, to [track any changes in patients' experiences over time so we can continue to improve services / or to evaluate the success of quality improvement initiatives implemented since the last survey].

Obtaining feedback from patients and taking account of their views and priorities is vital for bringing about improvements in the quality of care.

When is the survey taking place?

Questionnaires will be posted to a sample of patients during [month]. Reminders will be sent to those who have not responded during [month(s)].

Patients are being asked about various aspects of their care, including [arrival at hospital, the quality of care and treatment, pain management, communication with doctors and nurses, information, and the hospital environment.]

Who is the survey being sent to?

The survey will be sent to a sample of [number] patients, aged 16 years and over, who spent at least one night in hospital during [month]. [An external survey contractor, {name}, is administering the survey so that patients' responses are anonymous].

How have the results from previous surveys been used?

Results from the 2011 inpatient survey helped to identify areas where there was most room for improvement [a summary of the key findings from the previous survey and how the trust acted on the results can be inserted here]

When will the results of this survey be available?

The results of this survey will be available in [month/date] in [location of where results will be published or shared with staff]. The survey findings will be reported in [format, e.g. a summary report, at a meeting etc...]. By working with both staff and patients we will use the feedback from this survey to further help improve patient's experiences at the trust.

Where can I find out more?

For more information about the survey, please contact [lead survey name and contact details].

Appendix 2: Suggested template text for pre-survey article for external media

Title: **[NHS Trust name] seeks patient views or
Patient views vital to drive service improvements in [NHS Trust
name]
Your chance to tell [NHS Trust name] about quality of care**

[NHS Trust name] is carrying out a survey to find out what patients think about the care they receive. The trust plans to use this feedback to improve patients' experiences. The results will be used to help [NHS Trust name] highlight areas where they perform well and to identify the areas where there is most room for improvement.

Patients who have recently been an inpatient at [Hospital A and Hospital B] may receive a questionnaire in [month], asking about their experiences. They will be asked about various aspects of their care, including [arrival at hospital, the quality of care and treatment, communication with doctors and nurses, information, and the hospital environment.]

Obtaining feedback from patients and taking account of their views and priorities is vital for bringing about improvements in the quality of care. Results from the survey will be used to [insert purpose of survey here, e.g. to track patients' experiences of care received at the trust since the last survey was undertaken in [2011] / or to measure the impact of changes made at the trust based on feedback from the 2011 survey / or to find out if recent changes made to the service has led to an improvement in patients' experiences.]

Results from the 2011 adult inpatient survey helped to identify areas where there was most room for improvement [a summary of the key findings from the previous survey and how the trust acted on the results can be inserted here.]

The results of the survey will be presented in a form that does not allow any individual's answers to be identified. The results will be published by [NHS Trust name] in [month and year].

[A senior executive at the trust] says "We hope that our patients will take the time to help us with this survey. Their views are vital in helping us to find out how we are doing and how we can improve. This is an excellent way for patients to help shape the services we provide in the future."

Appendix 3: Declarations of data protection compliance

Declaration of compliance with the Data Protection Act 1998

**DECLARATION
RELATING TO THE
2012 adult inpatient survey
FOR TRUSTS USING IN-HOUSE SURVEY TEAMS**

While carrying out the 2012 adult inpatient survey, all trusts need to comply with:

- the Data Protection Act 1998,
- the NHS Code of Practice on Confidentiality, and
- the Caldicott principles.

Due to the large amount of patient information requested by the NHS patient survey programme, it has become necessary to regulate which individuals at a trust are able to view the raw data and some of the processed data. Only those trust staff who have completed this declaration will be authorised to view this restricted data. As the Caldicott Guardian is the designated person within the trust to supervise access to patient identifiable information, all declarations must be co-signed by the trust's Caldicott Guardian. If the trust's Caldicott Guardian does not authorise this, the trust must carry out the survey using an approved contractor.

For further information on the guidelines, please see the "Data protection and confidentiality" section of the Guidance Manual for the 2012 adult inpatient survey.

I, **[insert name of Caldicott Guardian]** the Caldicott Guardian for **[insert trust name]** declare the aforementioned trust to be compliant with the Data Protection Act 1998 and will ensure that data collected while carrying out the NHS patient survey programme will conform to the guidelines set out under the section "Data protection and confidentiality" in the Guidance Manual for the 2012 adult inpatient survey.

Signature: Date:

I, **[insert name of first survey lead]** the first Survey Lead for **[insert trust name]** declare I understand the requirements of the Data Protection Act 1998 as they relate to the 2012 adult inpatient survey and will ensure that data collected while carrying out the NHS patient survey programme will conform to these requirements and the guidelines set out under the section "Data protection and confidentiality" in the Guidance Manual for the 2012 adult inpatient survey.

Signature: Date:

I, **[insert name of second survey lead]** the second Survey Lead for **[insert trust name]** declare I understand the requirements of the Data Protection Act 1998 as they relate to the 2012 adult inpatient survey and will ensure that data collected while carrying out the NHS patient survey programme will conform to these requirements and the guidelines set out under the section "Data protection and confidentiality" in the Guidance Manual for the 2012 adult inpatient survey.

Signature: Date:

Appendix 4: Declarations for additional data analysts

Declaration of compliance with the Data Protection Act 1998

DECLARATION
RELATING TO THE
2012 adult inpatient survey
Additional data analysts

If the trust requires additional data analysts to have access to the raw data set, this form must be completed and sent to the Co-ordination Centre, and a response received before access to the data set is granted. Only those trust staff who have completed this declaration will be authorised to view this restricted data. As the Caldicott Guardian is the designated person within the trust to supervise this access, all declarations must be co-signed by the Caldicott Guardian. If the Caldicott Guardian does not authorise this, the raw data set and responses from subgroups numbering less than twenty can only be viewed by the authorised survey leads.

For further information on the guidelines, please see the "Data protection and confidentiality" section in the Guidance Manual for the 2012 adult inpatient survey.

I, [insert name of Caldicott Guardian] the Caldicott Guardian for [insert trust name] declare the aforementioned trust to be compliant with the Data Protection Act 1998 and will ensure that data collected while carrying out the NHS patient survey programme will conform to the guidelines set out under the section "Data protection and confidentiality" in the Guidance Manual for the 2012 adult inpatient survey.

Signature: Date:

I, [first additional data analyst] the first additional data analyst for [insert trust name] declare I understand the requirements of the Data Protection Act 1998 as they relate to the 2012 adult inpatient survey and will conform to these requirements and the guidelines set out under the section "Data protection and confidentiality" in the Guidance Manual for the 2012 adult inpatient survey.

Signature: Date:

I, [second additional data analyst] the second additional data analyst for [insert trust name] declare I understand the requirements of the Data Protection Act 1998 as they relate to the 2012 adult inpatient survey and will conform to these requirements and the guidelines set out under the section "Data protection and confidentiality" in the Guidance Manual for the 2012 adult inpatient survey.

Signature: Date: